

READ BEFORE USE

Visit www.hamiltonbeach.in for our complete line of products and Use and Care Guides – as well as delicious recipes, tips, and other useful information!

Questions?
Please call us – our friendly associates are ready to help.
1.800.42.555.43

Hamilton Beach®

SaladXpress



IMPORTANT SAFEGUARDS

This appliance is intended for household use only.

When using electrical appliances, basic safety precautions should always be followed to reduce the risk of fire, electric shock, and/or injury to persons, including the following:

1. Read all instructions.
2. This appliance can be used by children aged from 8 years and above and persons with reduced physical, sensory, or mental capabilities, or lack of experience and knowledge, if they have been given supervision or instruction concerning use of the appliance in a safe way and understand the hazards involved.
3. Children shall not play with the appliance. Cleaning and user maintenance shall not be made by children without supervision.
4. To protect against risk of electrical shock, do not immerse base, motor, cord, or plug in water or other liquid.
5. Unplug cord from outlet when not in use, before putting on or taking off parts, and before cleaning.
6. Avoid contacting moving parts.
7. Do not operate any appliance with a damaged supply cord or plug, or after the appliance malfunctions, or is dropped or damaged in any manner. Call our toll-free customer assistance number for information. Supply cord replacement and repairs must be conducted by the manufacturer, its service agent, or similarly qualified persons in order to avoid a hazard.
8. The use of attachments not recommended or sold by the appliance manufacturer may cause fire, electric shock, or injury.
9. Do not use your food processor if any part is broken.
10. Do not use appliance outdoors.
11. Do not let cord hang over edge of table or counter, or touch hot surfaces.

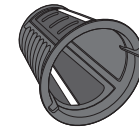
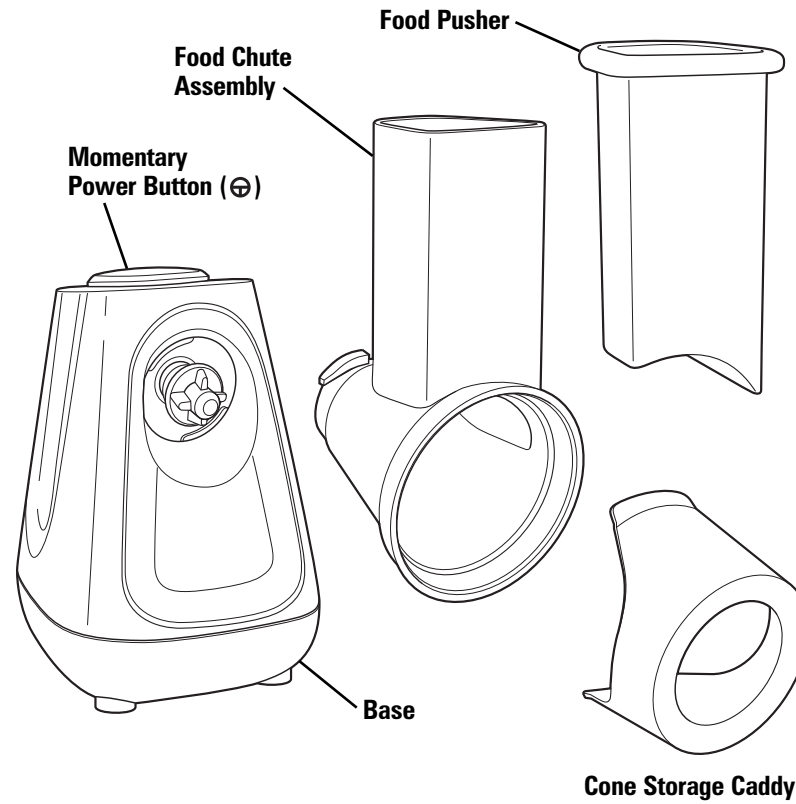
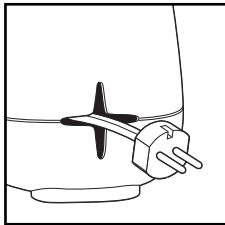
- 12.** Keep hands and utensils away from moving cones while processing food to reduce the risk of severe personal injury and/or damage to the food processor. A rubber scraper may be used but **ONLY** when the appliance is not running.
- 13.** The blades in the cones are sharp. Handle carefully. Store out of reach of children.
- 14.** Never feed food into food chute by hand. Always use the food pusher.
- 15.** Make sure the cones have come to a full stop before removing.
- 16.** To reduce the risk of injury, be sure to insert or remove cones using hubs provided for this purpose. Use caution when removing cones and when cleaning.
- 17.** Always use the pusher to clear the food chute. When this method is not possible, unplug cord from outlet and disassemble unit to remove the remaining food.
- 18.** The appliance is not intended for commercial, professional, or industrial use. It is designed and built exclusively for household use only.
- 19.** Never use appliance for a longer period or with a larger amount of ingredients other than that recommended by appliance manufacturer.
- 20.** Do not place on or near a hot gas or electric burner or in a heated oven.
- 21.** Do not use appliance for other than intended use.

SAVE THESE INSTRUCTIONS!

Parts and Features

BEFORE FIRST USE: Unpack SaladXpress. Handle cones carefully; they are very sharp. Wash all parts except base in hot, soapy water. Rinse; then dry.

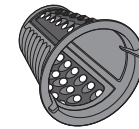
Cord Stuff Storage
(located on back of base)



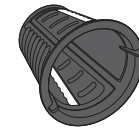
Green Slicing Cone



Yellow Grating Cone



Orange Shredding Cone

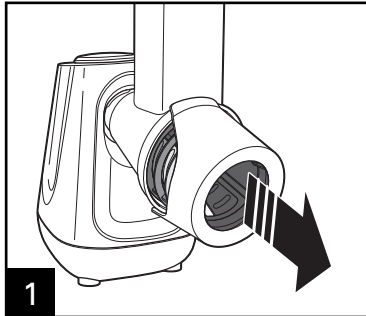


Red Crinkle-Cut Cone

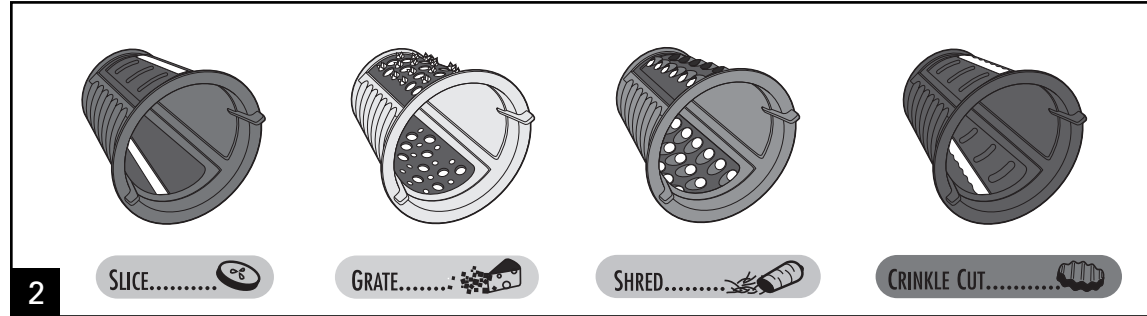
How to Use SaladXpress

⚠ WARNING Laceration Hazard.

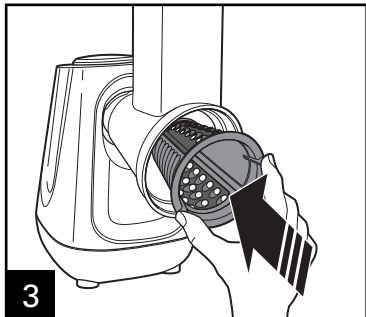
Handle cones carefully; they are very sharp. Turn off and unplug before inserting or removing cones.
NOTE: Operate using only one cone at a time.



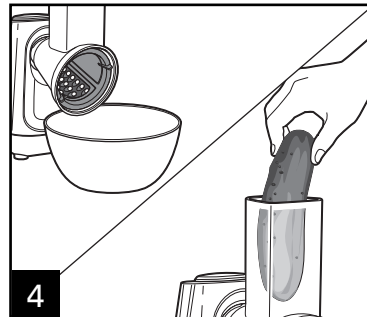
1 Remove cone storage caddy from front of food chute. Carefully remove cones.



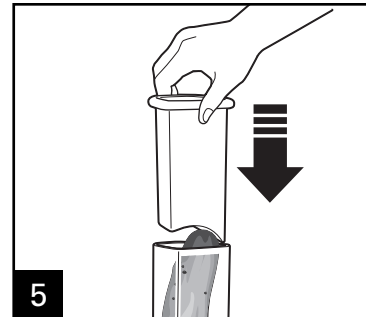
2 Choose appropriate cone for the food you will be slicing, shredding, grating, or crinkle-cutting. Refer to chart on page 6 and color graphic on back of unit.



3 Using tabs, place cross-shaped opening of cone onto cross-shaped piece on food chute assembly. Turn clockwise to lock.

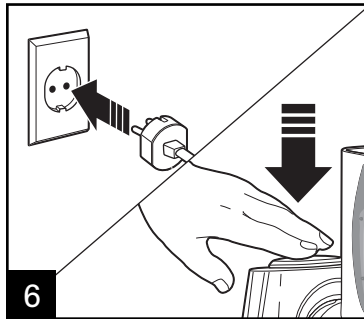


4 Place a bowl under chute opening to catch sliced food. Fill chute with food.



Place food pusher in food chute.
⚠ WARNING Laceration Hazard:
 Always use food pusher to feed food into food chute. **NEVER PUSH FOOD THROUGH CHUTE WITH HANDS OR OTHER OBJECTS.**

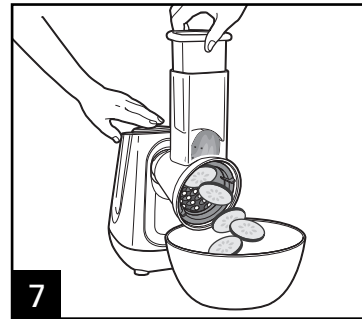
How to Use SaladXpress



6 Press momentary power (⊕) button.

⚠ WARNING Laceration

Hazard: Keep hands away from chute opening while unit is running.



7 Push food pusher down as SaladXpress processes food into bowl.

Tips and Techniques

- This SaladXpress is excellent to slice, shred, grate, or crinkle-cut most foods. Do not use your food processor for the following: grinding grain, coffee beans, or spices; or slicing meat or frozen foods.
- Operating time will depend on quantity of food being processed. Most foods can be sliced, grated, or shredded in seconds. If unit is operated continuously for an extended period of time, let the processor rest about 4 minutes before continuing.
- To slice or shred cheese, use only firm cheese like Cheddar or Swiss that has been chilled for at least 30 minutes. Cheese should be processed immediately after being removed from the refrigerator. Soft cheese like mozzarella should be placed in the freezer for 30 minutes prior to processing to ensure it is firm enough for shredding.
- To prevent browning of some sliced fruits, mix 15 ml (1 Tablespoon) lemon juice with 237 ml (1 cup) water. Soak 3 to 5 minutes; drain fruit and pat dry with a paper towel. Refrigerate fruit immediately.

6

Processing Charts

ATTACHMENT	FOODS
Green Slicing Cone	Cucumbers, celery, apples, carrots, potatoes, cabbage, peppers, radishes, firm-chilled cheeses, zucchini, yellow squash, sweet potatoes, beets, strawberries, pears, jicama, cookies (for ice cream toppings or mix-ins)
Yellow Grating Cone	Chocolate, graham crackers or vanilla wafers (for pie crust), firm-chilled cheeses such as Parmesan, Romano, or cheddar
Orange Shredding Cone	Cabbage, potatoes, carrots, sweet potatoes, yellow squash, zucchini, broccoli stalks, radishes, leeks, chilled cheeses
Red Crinkle-Cutting Cone	Potatoes, radishes, carrots, cucumbers, zucchini, yellow squash, sweet potatoes, beets, jicama, apples, pears

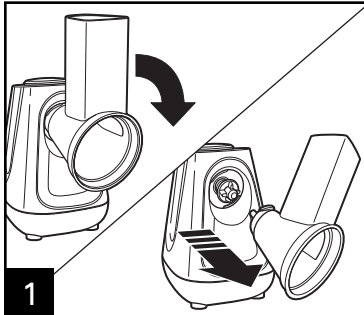
Visit www.hamiltonbeach.in for our complete line of products and Use and Care Guides – as well as delicious recipes, tips, and other useful information!

Care and Cleaning

⚠ WARNING Electrical Shock Hazard.

Disconnect power before cleaning. Do not immerse cord, plug, or base in any liquid.

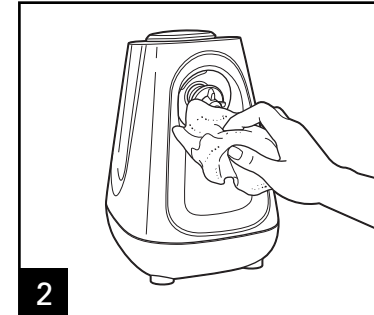
Laceration Hazard. Handle cones carefully; they are very sharp. Turn off and unplug before inserting or removing cones.



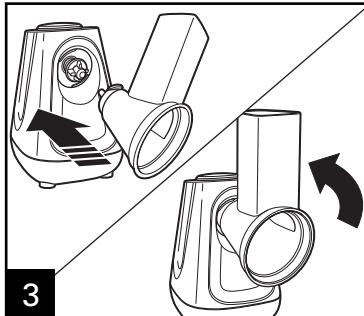
1 Unplug unit. To remove food chute for cleaning, rotate clockwise to unlock.



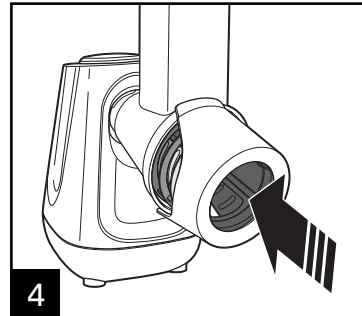
DISHWASHER-SAFE
DO NOT use the "SANI" setting when washing in the dishwasher. "SANI" cycle temperatures could damage your product. All removable parts may also be cleaned in the sink with hot, soapy water. Use caution when washing cones.



2 Wipe base and cord with a damp cloth or sponge. If necessary, use a mild nonabrasive cleanser.



3 To replace food chute assembly, align small end of food chute assembly with opening on base. Rotate counterclockwise to lock in place.



4 To store cones, insert all four cones into chute opening and snap on storage caddy.

Troubleshooting

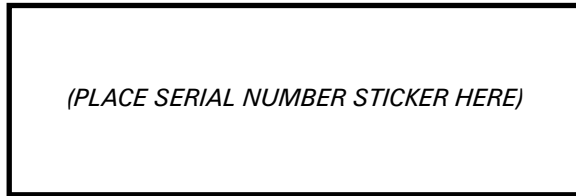
PROBLEM	PROBABLE CAUSE/SOLUTION
Food is not sliced or shredded uniformly.	<ul style="list-style-type: none">• Packing too much food in the food chute or pushing too hard on the food pusher may cause the processed food to be irregularly sliced or shredded.
Unit stops and will not come back on.	<ul style="list-style-type: none">• Is the outlet still working? Check it by plugging in a working lamp or other appliance. You may have overloaded the circuit and blown a fuse or tripped the circuit breaker.• Unplug unit, allow to stand for 3 to 4 minutes, and then press ON. If none of these suggestions correct the problem, DO NOT attempt to repair the unit. Call the Customer Service number to get the name of your nearest Authorized Service Center.
Unit has a burning smell.	<ul style="list-style-type: none">• There may be a residue left on the motor from the manufacturing process, causing a slight odor during initial use. This will go away. If a strong odour or any visible smoke appears, unplug unit IMMEDIATELY and call the Customer Service number.
Cheese is not shredding well.	<ul style="list-style-type: none">• Cheese should be processed immediately after being removed from the refrigerator. Soft cheese like mozzarella should be placed in the freezer for 30 minutes prior to processing to ensure it is firm enough for shredding.
Fruits or vegetables are not shredding or slicing.	<ul style="list-style-type: none">• Fruits or vegetables should be firm and not overripe. Store vegetables with high water content in the refrigerator prior to processing. Room-temperature vegetables are less firm and do not perform as well.

Limited Warranty

CUSTOMER NAME: _____
ADDRESS: _____
PHONE NUMBER: _____
MODEL NUMBER: _____
DATE OF PURCHASE: _____ BILL NUMBER: _____

NAME OF DEALER: _____
DEALER'S SIGNATURE: _____
CUSTOMER'S SIGNATURE: _____
STAMP:

SERIAL NUMBER:



EXPIRY DATE:

SHOULD ANY DEFECT IN MATERIAL OR WORKMANSHIP DEVELOP IN THE PRODUCT,

- CALL 1.800.42.555.43 OR VISIT www.hamiltonbeach.in FOR SERVICE CENTER LOCATIONS OR
- KINDLY TAKE THE PRODUCT TO THE PLACE OF PURCHASE OR
- CALL 1.800.42.555.43 FOR SERVICE AT HOME¹

THE PRODUCT OR ANY COMPONENT OF PRODUCT FOUND TO BE DEFECTIVE WILL BE REPAIRED OR REPLACED FREE OF CHARGE DURING THE WARRANTY PERIOD OF 2 YEARS, FROM THE DATE OF PURCHASE. IF THE PRODUCT OR COMPONENT IS NO LONGER AVAILABLE, WE WILL REPLACE WITH A SIMILAR ONE OF EQUAL OR GREATER VALUE.

¹At-home service is limited to certain geographical areas in India; please call 1.800.42.555.43 for further details.

840226410

12/14

VALIDITY:

- THIS WARRANTY IS ISSUED SUBJECT TO THE PRODUCTION AND VERIFICATION OF THE ORIGINAL PROOF OF PURCHASE.
- THIS WARRANTY IS VALID IN INDIA ONLY AND IF PRODUCT HAS BEEN PURCHASED FROM AN AUTHORIZED HAMILTON BEACH DEALER.
- THIS WARRANTY DOES NOT COVER GLASS, FILTERS, WEAR FROM NORMAL USE, USE NOT IN CONFORMITY WITH THE PRINTED DIRECTIONS, OR DAMAGE TO THE PRODUCT RESULTING FROM ACCIDENT, ALTERATION, ABUSE, OR MISUSE. THIS WARRANTY ONLY EXTENDS TO THE ORIGINAL CONSUMER PURCHASER OR THE GIFT RECIPIENT.

THE WARRANTY WILL BE CONSIDERED INVALID IF:

- PRODUCT HAS NOT BEEN USED PER THE MANUFACTURER'S OPERATING INSTRUCTIONS.
- PRODUCT HAS BEEN SERVICED, REPAIRED, OPENED, OR TAMPERED WITH BY ANY UNAUTHORIZED PERSON.
- UNAUTHORIZED CORRECTION/ALTERATIONS IN INVOICE COPY/ INSTALLATION NOTE/SERIAL NUMBER OF PRODUCT.
- INCOMPLETE WARRANTY CARD AFTER PURCHASE.
- ANY ATTACHMENTS NOT RECOMMENDED BY THE MANUFACTURER HAVE BEEN USED ON THE PRODUCT.
- PRODUCT IS USED FOR OTHER THAN SINGLE-FAMILY HOUSEHOLD USE OR SUBJECT TO ANY VOLTAGE AND WAVEFORM OTHER THAN 220-240V~/ 50Hz.