



## **WARNING**



### **To reduce the risk of fire:**

- Do not operate while unattended.
- Do not use with food that has been spread with butter, jelly, frosting, etc.
- Do not use with rice cakes, fried foods, frozen prepared foods, or non-bread items.
- Do not use with toaster pastries. Always cook toaster pastries in a oven toaster.
- Do not cover or use near curtains, walls, cabinets, paper or plastic products, cloth towels, etc.
- Closely supervise when used by or near children.
- Always unplug toaster when not in use, and before cleaning.

Failure to follow these instructions can result in death or fire.



**CAUTION: HOT SURFACE.** The temperature of accessible surfaces may be high when the appliance is operating.

## **IMPORTANT SAFEGUARDS**

## **SAVE THESE INSTRUCTIONS!**

This appliance is intended to be used in household and similar applications such as (1) staff kitchen areas in shops, offices, and other working environments; (2) farm houses; (3) by clients in hotels, motels, and other residential-type environments; and (4) bed and breakfast-type environments.

When using electrical appliances, basic safety precautions should always be followed to reduce the risk of fire, electric shock, and/or injury to persons, including the following:

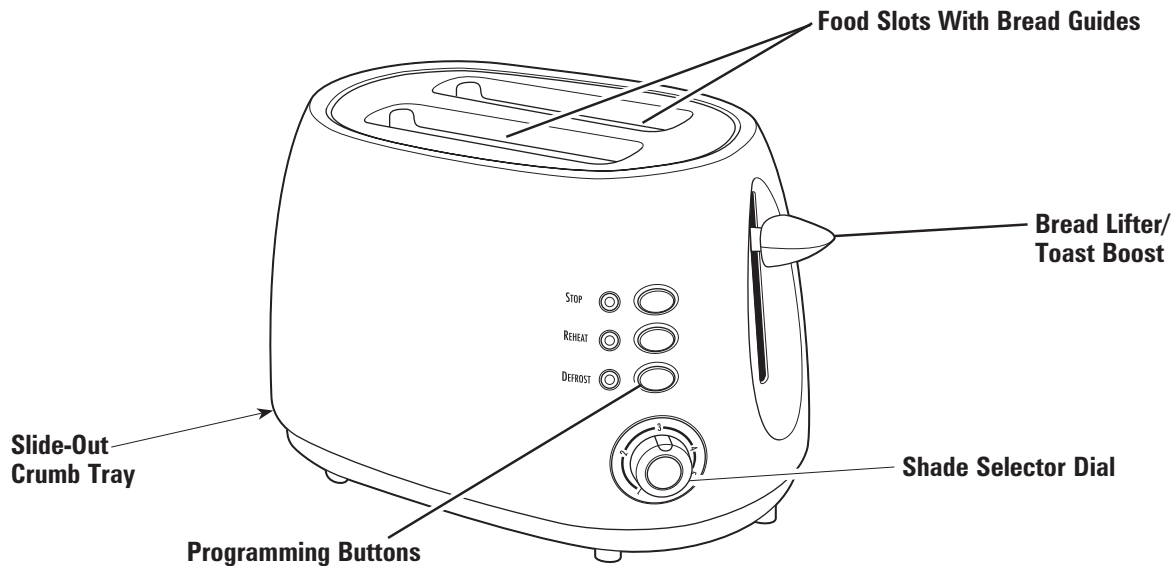
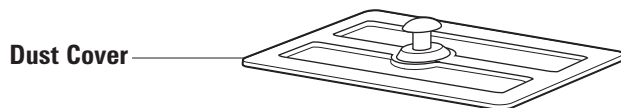
- 1.** Read all instructions.
- 2.** Do not touch hot surfaces.  
Use handles or knobs.
- 3.** Do not use outdoors.
- 4.** To protect against electrical shock, do not immerse cord, plug, or toaster in water or other liquid.
- 5.** Do not attempt to dislodge food when toaster is plugged in.
- 6.** The bread may burn, therefore do not use near or below combustible material, such as curtains.

7. This appliance can be used by children aged from 8 years and above and persons with reduced physical, sensory or mental capabilities or lack of experience and knowledge if they have been given supervision or instruction concerning use of the appliance in a safe way and understand the hazards involved. Children shall not play with the appliance. Cleaning and user maintenance shall not be made by children without supervision.
8. Allow to cool before putting on or taking off parts, or moving toaster.
9. Do not operate toaster with a damaged supply cord or after toaster malfunctions or has been damaged in any manner. Supply cord replacement or repairs must be conducted by the manufacturer, its service agent, or similarly qualified persons in order to avoid a hazard. Call our toll-free customer service number for information on examination, repair, or adjustment.
10. The use of accessory attachments not recommended by the appliance manufacturer may cause injuries.
11. Do not let cord hang over edge of table or counter, or touch hot surfaces, including the stove.
12. Do not operate the appliance by means of an external timer or separate remote-control system.
13. Do not use toaster for other than intended use.
14. Oversized foods, metal foil packages, or utensils must not be inserted in a toaster as they may involve a risk of fire or electric shock.
15. A fire may occur if toaster is covered or touching flammable material, including curtains, draperies, walls, overhead cabinets, paper or plastic products, cloth towels, and the like, when in operation.
16. A fire may occur if toaster is operated in an enclosed space, such as an appliance cabinet, caddy, garage, or other storage area.
17. Do not place on or near a hot gas or electric burner, or in a heated oven.
18. Only use dust cover when toaster is unplugged and has completely cooled.
19. The temperature of accessible surfaces may be high when the appliance is operating.
20. **WARNING:** Fire Hazard: Never use a plastic or foil wrap on buns.
21. Failure to clean crumb tray may result in a fire hazard.
22. Do not clean with metal scouring pads. Pieces can break off pad and touch electrical parts resulting in risk of electrical shock.
23. Before unplugging toaster, make sure bread lifter is in "up" position. Never pull on the cord to disconnect the toaster from the electrical outlet; instead, grasp the plug and pull on the plug to disconnect the toaster.

# Parts and Features

## Other Consumer Safety Information

To avoid an electrical circuit overload, do not use another high-wattage appliance on the same circuit with this appliance.



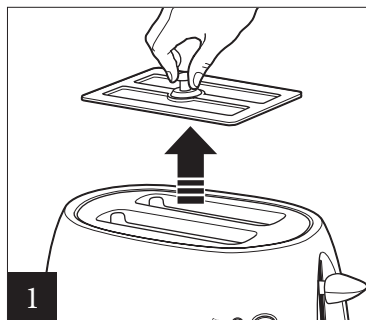
# How to Use Your Toaster



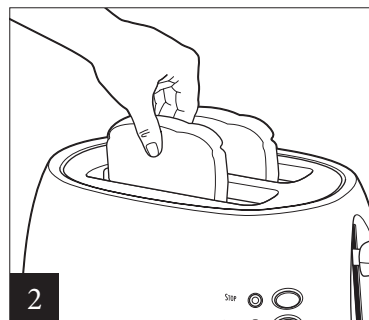
## Fire Hazard.

Do not operate toaster unattended.  
Unplug after use.

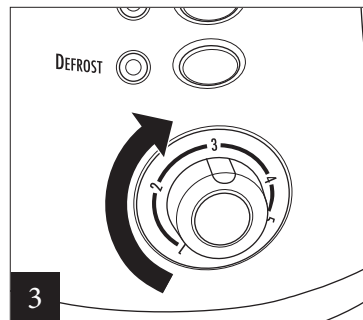
**NOTE:** Bread lifter will not latch down unless toaster is plugged in.



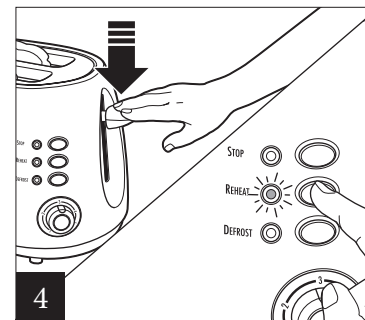
**1**  
**WARNING! Fire Hazard:**  
Remove dust cover during use.



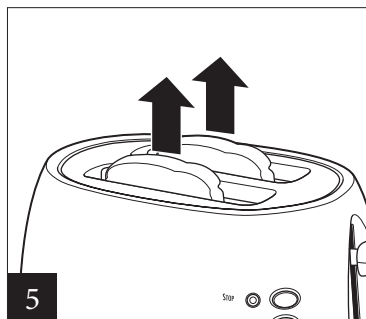
**2**



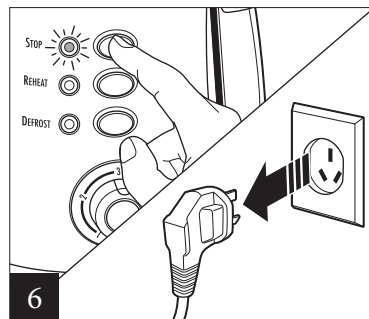
**3**



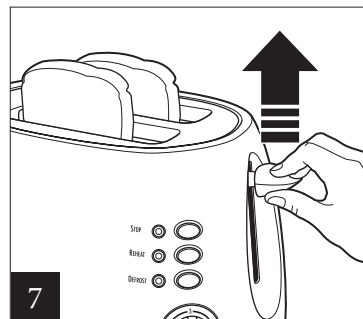
**4**  
Select programming button after the bread lifter has been pushed down (if desired).



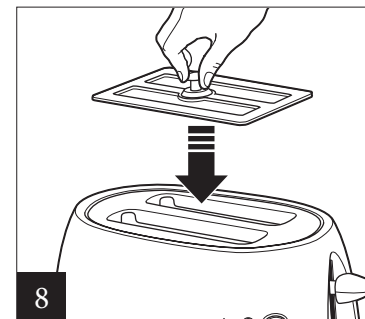
**5**  
At the end of the toasting cycle, the bread will pop up automatically.



**6**  
Press **STOP** button to stop a function at any time. Unplug toaster.



**7**  
**TOAST BOOST:** After toast cycle ends, raise bread lifter to remove food easily.



**8**  
Dust cover may be used after toaster is unplugged and has cooled completely.

# Toasting Chart

FOOD	SHADE SETTING	OPTIONAL SETTING
Regular bread	2-4	
English muffins	3-5	Reheat
Buns	2	Reheat
Frozen bread	3-5	Defrost
Frozen bagels or buns	4-5	Defrost
Frozen waffles	4	Defrost
Toaster pastries (such as Pop-Tarts®) Pop-Tarts® is a registered trademark of the Kellogg Co.	Do not heat in toaster. Use Toaster Oven broiler. If you must use toaster, ALWAYS set to lowest shade setting. NEVER heat cracked, broken, or warped pastries and NEVER leave unattended.	

## Tips and Troubleshooting

- Toasting is affected by the temperature of the bread. Room-temperature bread may toast to a medium color on the 2-4 setting. The same type of bread that has been refrigerated may require a darker setting to reach a medium color.
- The moisture content will also affect toasting.
- Because of the irregular surface of English muffins, they may require more than one toasting cycle. After toasting for one cycle on the highest setting, if a darker shade is desired, adjust shade selector to a lower setting and toast for a second cycle. Watch closely to avoid overbrowning. English muffins cut with a knife toast more evenly than English muffins split with a fork.
- When toasting only one slice, the bread may be placed in any slot of the toaster. When toasting a single slice, you may notice variations in bread color from side to side.

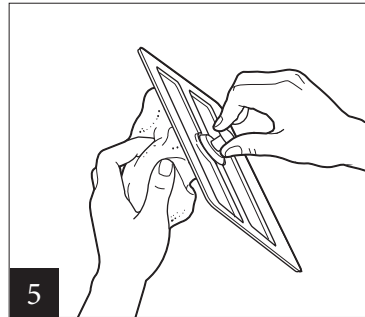
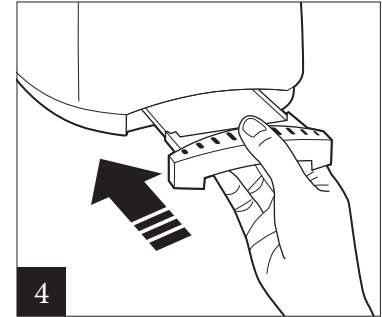
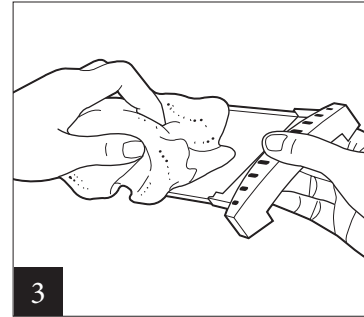
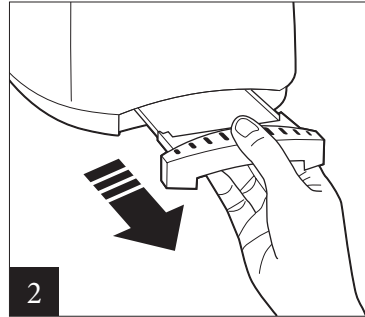
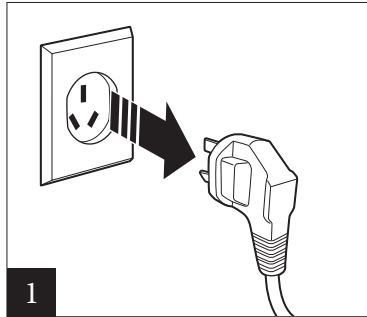
# Care and Cleaning

**⚠ WARNING**

## Electrical Shock Hazard.

Do not clean with metal scouring pads. Pieces can break off pad and touch electrical parts, causing a risk of electric shock.

Your toaster should be cleaned regularly for best performance and long life. Regular cleaning will also reduce the risk of fire hazard.



To remove food that becomes lodged in food slots, disconnect from outlet and allow toaster to cool. Turn toaster upside down and shake. Do not use fork or other utensil that could damage heating element or result in risk of fire or electrical shock.