

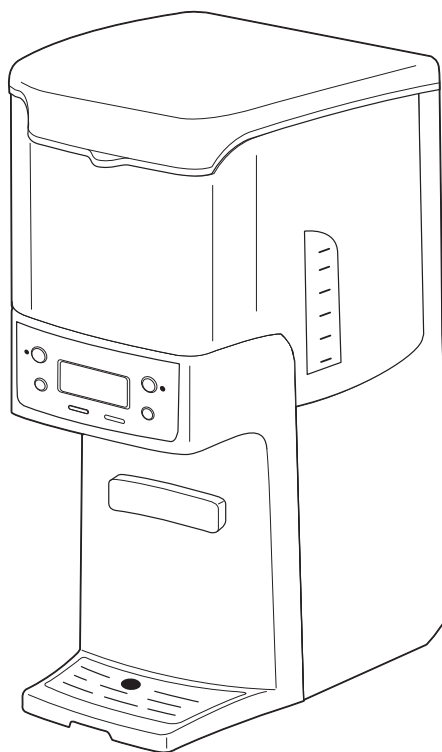
READ BEFORE USE

Visit www.hamiltonbeach.in for our complete line of products and Use and Care Guides – as well as delicious recipes, tips, and other useful information!

Questions?
Please call us – our friendly associates are ready to help.
1.800.42.555.43

Hamilton Beach®

BrewStation



IMPORTANT SAFEGUARDS

When using electrical appliances, basic safety precautions should always be followed to reduce the risk of fire, electric shock, and/or injury to persons, including the following:

1. Read all instructions.
2. This appliance is intended to be used in household and similar applications such as: staff kitchen areas in shops, offices, and other working environments; farm houses; by clients in hotels, motels, and other residential type environments; bed and breakfast-type environments.
3. Do not touch hot surfaces. Use handles or knobs. Care must be taken, as burns can occur from touching hot parts or from spilled, hot liquid.
4. To protect against electric shock, do not place cord, plug, or BrewStation in water or other liquid.
5. This appliance can be used by children aged from 8 years and above and persons with reduced physical, sensory, or mental capabilities or lack of experience and knowledge if they have been given supervision or instruction concerning use of the appliance in a safe way and understand the hazards involved. Children shall not play with the appliance. Cleaning and user maintenance shall not be made by children without supervision.
6. Close supervision is necessary when any appliance is used by or near children.
7. Unplug from outlet when either the BrewStation or clock is not in use and before cleaning. Allow to cool before putting on or taking off parts and before cleaning the appliance.
8. Scalding may occur if the lid is lifted during the brewing cycle. Do not open lid until coffeemaker has cooled completely.
9. BrewStation must be operated on a flat surface away from the edge of counter to prevent accidental tipping.
10. Do not operate any appliance with a damaged supply cord, or after the appliance malfunctions or has been damaged in any manner. Supply cord replacement and repairs must be conducted by the manufacturer, its service agent, or similarly qualified persons in order to avoid a hazard.
11. The use of accessory attachments not recommended by the appliance manufacturer may cause injuries.
12. Do not use outdoors.
13. Do not let cord hang over edge of table or counter or touch hot surfaces, including stove.
14. The coffee tank is designed for use with this BrewStation. It must never be used on a range top or in a microwave oven.
15. Do not place BrewStation on or near a hot gas or electric burner or in a heated oven.
16. To disconnect BrewStation, turn controls to OFF and then remove plug from wall outlet.
17. **WARNING!** To reduce the risk of fire or electric shock, do not remove the bottom cover. No user-serviceable parts are inside. Repair should be done by authorized service personnel only.
18. Do not use appliance for other than intended use.

SAVE THESE INSTRUCTIONS!

IMPORTANT

Never use coffee tank to pour hot coffee or carry hot coffee.
Handle coffee tank when it holds only cold water.



Additional Information

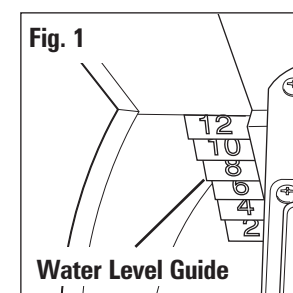
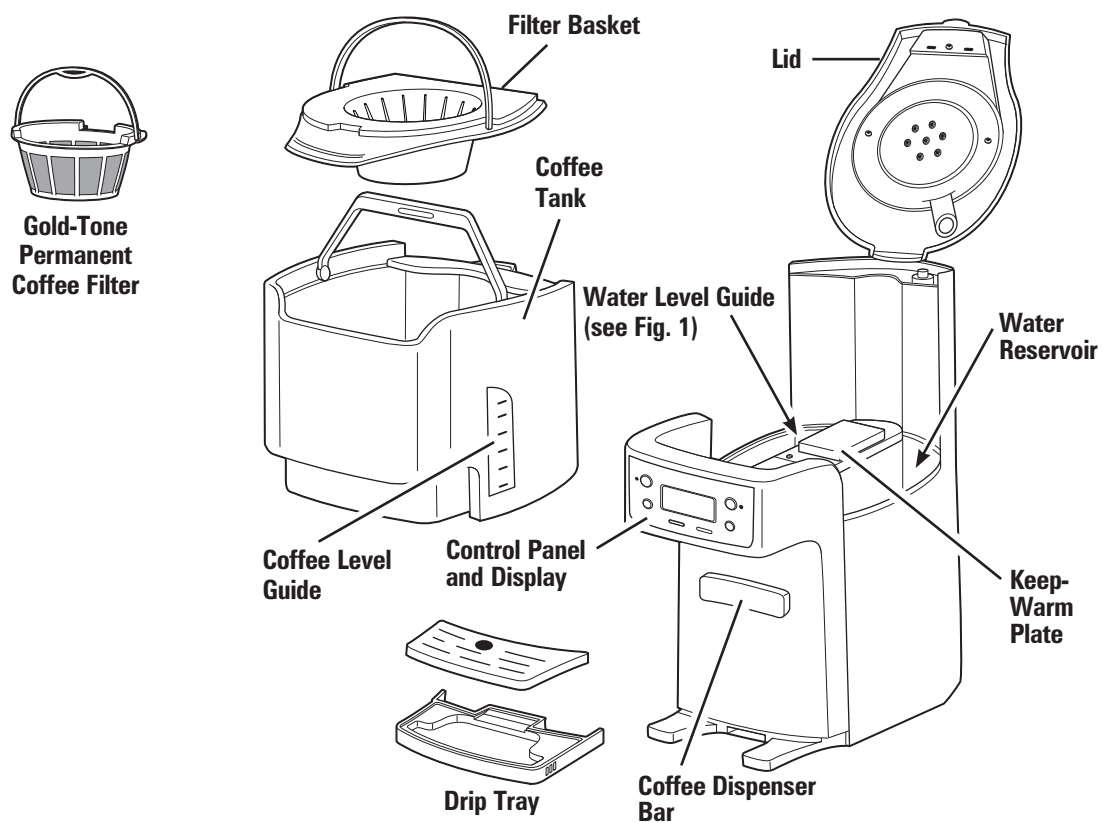
- If overflow occurs: Let unit, coffee, and grounds cool completely before attempting any cleanup.
- Use only brand-name, high-quality filters.
- Use only 1 Tablespoon (15 ml) of ground coffee for each cup of water.
- Use coffeemaker cleaner to prevent hard water deposits that affect coffeemaker performance. Clean monthly.
- Do not clean coffee tank in dishwasher.
- Read instructions before using.

Other Consumer Safety Information

The length of the cord used on this appliance was selected to reduce the hazards of becoming tangled in or tripping over a longer cord. If a longer cord is necessary, an approved extension cord may be used. The electrical rating of the extension cord must be equal to or greater than the rating of the appliance. Care must be taken to arrange the extension cord so that it will not drape over the countertop or tabletop where it can be pulled on by children or accidentally tripped over.

To avoid an electrical circuit overload, do not use another high-wattage appliance on the same circuit with your BrewStation.

Parts and Features



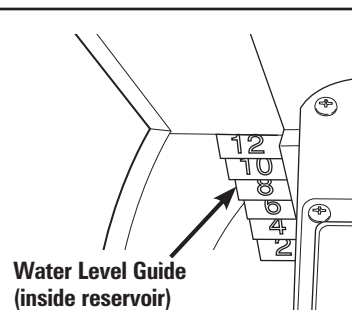
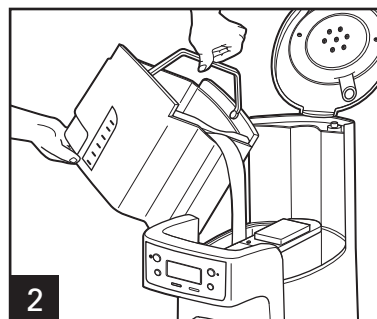
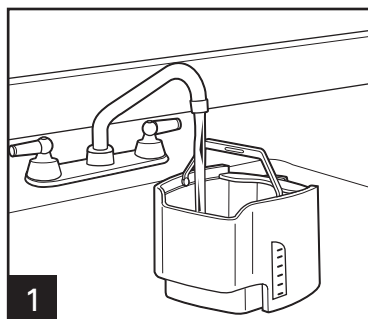
How To Make Coffee

BEFORE FIRST USE: Wash coffee tank, filter basket, and drip tray in hot, soapy water. NEVER put the coffee tank in dishwasher.

BrewStation can be programmed to automatically shut off in 0 (for Iced Coffee), 1, 2, 3, or 4 hours as desired. Default is 4 hours for automatic shutoff.

⚠ WARNING Burn Hazard.

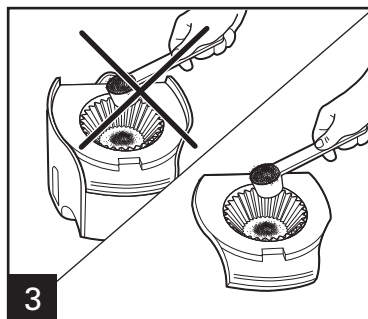
- Never use coffee tank to pour or carry hot coffee.
- Handle coffee tank only when holding cold water for filling water reservoir and to clean tank after BrewStation
- If BrewStation overflows, unplug unit. Allow unit, coffee, and grounds to cool before cleaning unit, coffee, or grounds.



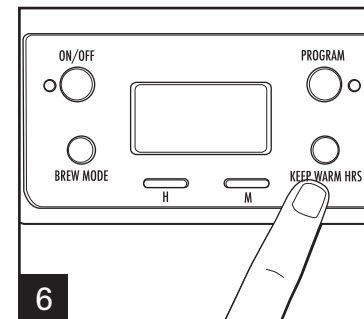
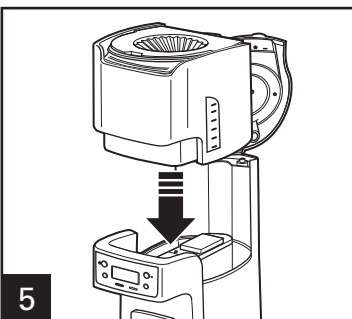
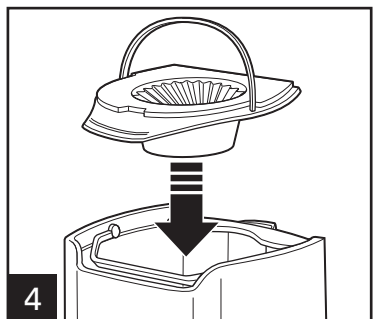
Normal Amount of Coffee Per Cup
1 level Tablespoon (15 ml) per cup

**Maximum Amount of Automatic
Drip Coffee to Use in BrewStation**

Coffee	Tablespoons
Regular	12
Decaf	12



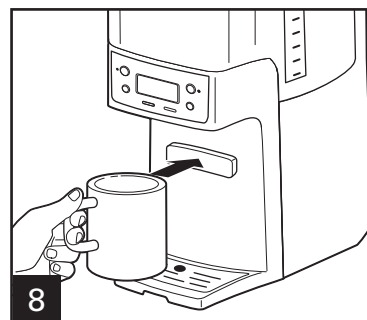
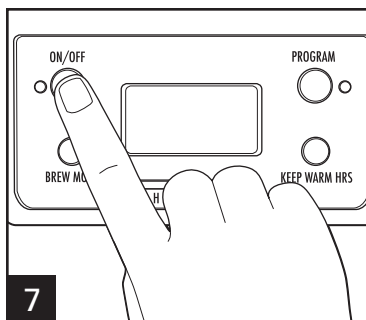
Avoid getting coffee grounds in any other areas of the BrewStation.



Set **KEEP WARM HOURS** to 1, 2, 3, or 4. The 0 setting is for iced coffee.

5

How To Make Coffee (cont.)




Coffeemaker will beep one time when brewing is complete.

Brew Modes

BOLD

Enhanced full/strong-flavored coffee
Press Brew Mode button until **00** is displayed

1-4 CUPS

When brewing 1–4 cups of coffee
Press Brew Mode button until **1.4**  is displayed

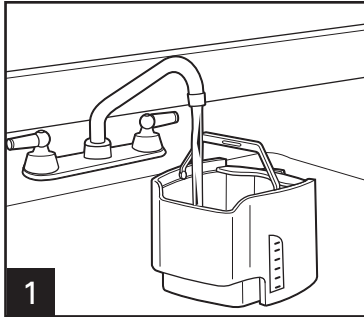
NOTE: **BOLD** and **1–4 CUPS** modes will require additional time to complete a brewing cycle. A Brew Mode must be selected prior to pressing the ON button. The setting cannot be changed during/ in brew mode. If a Brew Mode is not selected, the coffeemaker will automatically brew on the regular/default setting.

TO REHEAT COFFEE: Press and hold ON/OFF button for 3 seconds. This will reset the timer and keep coffee warm for selected number of hours (1, 2, 3, or 4).

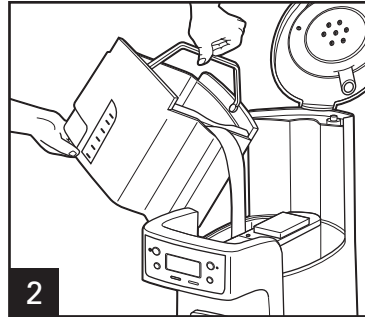
To Make Iced Coffee

⚠ **WARNING** Burn Hazard.

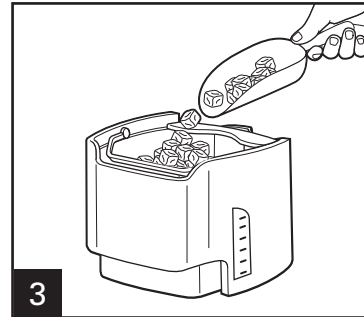
If BrewStation overflows, unplug unit. Allow unit, coffee, and grounds to cool before cleaning unit, coffee, or grounds.



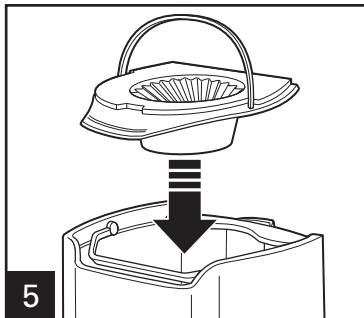
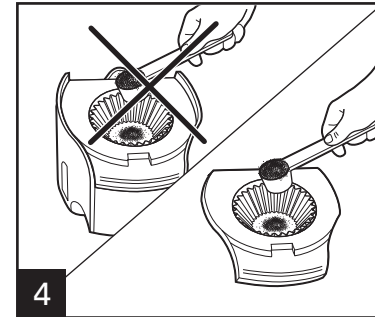
1
Fill coffee tank with water. Do not fill beyond the 6-cup line when making iced coffee.



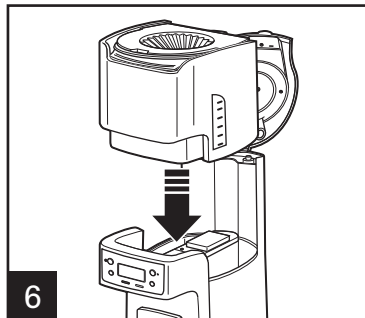
2
Fill coffee tank with ice to the 10 CUP marking line.



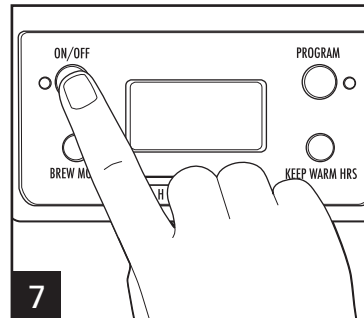
3
Brew double-strength coffee for iced coffee. Add 2 level Tablespoons of ground coffee per cup (up to 12 Tablespoons).



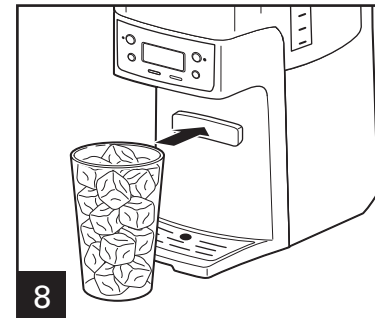
5



6
Set **KEEP WARM HOURS** to 0. Press **ON**.

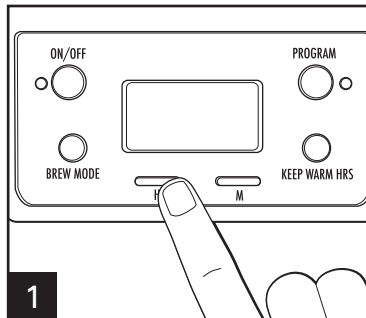


7
Set **KEEP WARM HOURS** to 0. Press **ON**.

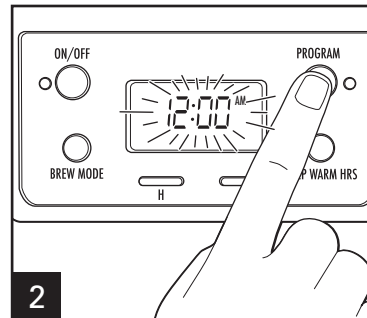


8

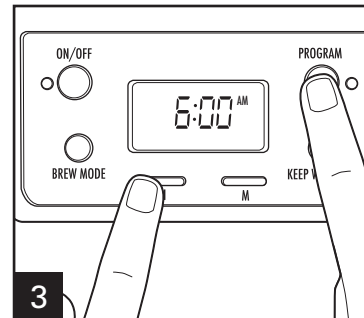
Programming



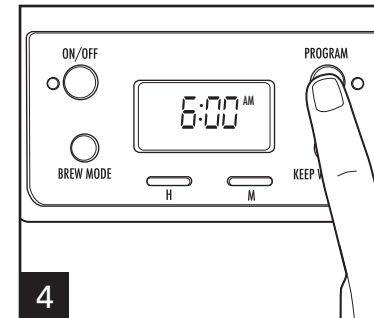
To set clock: Press **H** and then **M**.
NOTE: Clock time must be set for programming function to work.



To program auto brew: Press and hold **PROGRAM** until clock flashes.



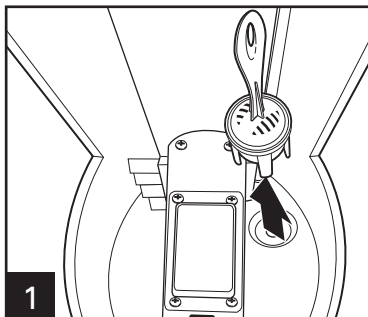
Continue holding **PROGRAM**; then press **H** and **M** until the desired brewing start time is reached.



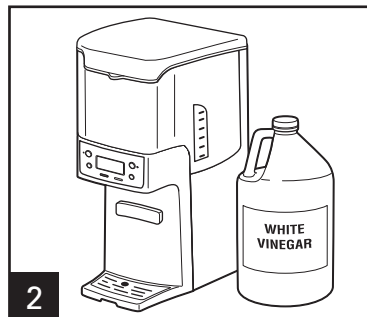
Press and release **PROGRAM** to activate automatic brewing. A green light will signal that the unit is in program mode.

Cleaning With Vinegar

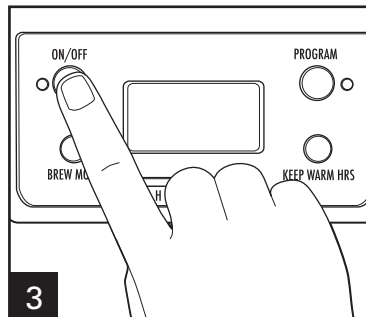
Clean BrewStation at least once a month (once a week for areas with hard water).



1 Remove optional water filter.

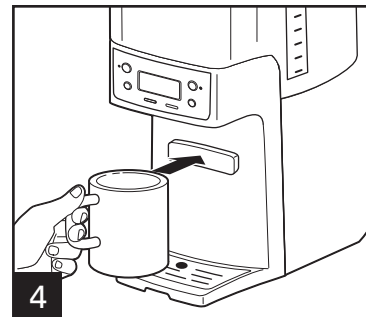


2 Pour 1 pint (2 cups/500 ml) vinegar into water reservoir.

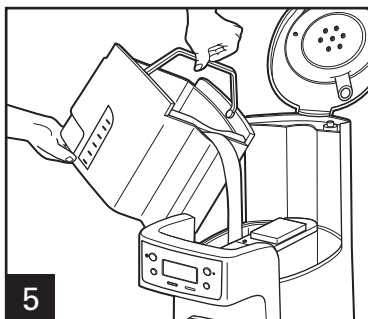


3 Press **ON**. Turn **OFF** after 20 seconds and wait 30 minutes. Press **ON**. Turn **OFF** when finished. When cool, dispense several cups before emptying and rinsing reservoir. **NOTE:** Coffeemaker will remind you it is time for cleaning in two ways:

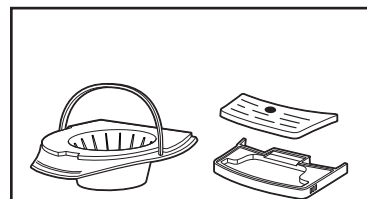
- Built-in cycle timer—Every 30 cycles, **CLEAN** will flash in display and stay illuminated for 2 cycles.
- Built-in residue sensor—**CLEAN** indicator will appear in display when unit senses residue buildup and remain illuminated until the unit has been cleaned.



4



5 Run 2-3 more brew cycles with **CLEAN WATER** only. Allow to cool between cycles.



DISHWASHER-SAFE

DO NOT use the "SANI" setting when washing in the dishwasher. "SANI" cycle temperatures could damage your product.

General Cleaning Instructions

⚠ WARNING Burn Hazard. Do not immerse cord, plug, or coffeemaker in any liquid.

Inside of Coffeemaker: Follow steps 1-5 in "Cleaning With Vinegar."

Filter Basket and Coffee Tank: Remove the filter basket and coffee tank and wash by hand with warm, soapy water. Filter basket may also be cleaned in top rack of dishwasher. Clean filter basket often.

Outside of Coffeemaker: Wipe outside with a soft cloth and warm, soapy water. Do not use abrasive cleaners, as they will scratch the finish of the product.

Troubleshooting

PROBLEM	PROBABLE CAUSE/SOLUTION
Coffee leaks from dispenser.	<ul style="list-style-type: none"> Coffee grounds trapped in coffee tank dispensing mechanism under seal in coffee tank. See "Cleaning With Vinegar."
CLEAN indicator appears in display.	<ul style="list-style-type: none"> This is a reminder to clean coffeemaker. See "Cleaning With Vinegar."
Coffee tastes bad.	<ul style="list-style-type: none"> Coffeemaker needs cleaning. Coffee ground too coarsely or too finely. Set coffee grinder to automatic drip grind. Coffee-to-water ratio unbalanced. Adjust for personal preference. Poor water quality. Use water filter or bottled water to make coffee.
Coffee not brewing or stops brewing/unit will not turn on.	<ul style="list-style-type: none"> Mineral deposits have built up. Clean the coffeemaker following "Cleaning With Vinegar." Water reservoir is empty. Unit is unplugged. Power outage or power surge. If surge, unplug; then plug back in.
Coffee brews slowly.	<ul style="list-style-type: none"> Coffeemaker needs cleaning. Clean at least every 30 days to maintain proper performance. Coffeemaker is in the 1-4 CUPS or BOLD modes. Press Brew Mode button until no lights appear.
Coffee overflows basket.	<ul style="list-style-type: none"> Excessive amounts of coffee grounds. See table on page 5. Coffee ground too finely. Set coffee grinder to automatic drip grind. More than one paper filter in filter basket. Poor quality paper filter or wrong size paper filter.
Unit beeps continuously/ will not brew and/or ADD WATER indicator appears in display.	<ul style="list-style-type: none"> No water in reservoir. Transfer water from coffee tank to reservoir.
Coffee is cold when dispensed.	<ul style="list-style-type: none"> Selected Keep Warm Hours have elapsed and coffeemaker has automatically shut off. See "To Reheat Coffee" instructions on page 6, or brew new cycle.

Notes

Limited Warranty

CUSTOMER NAME: _____
ADDRESS: _____
PHONE NUMBER: _____
MODEL NUMBER: _____
DATE OF PURCHASE: _____ BILL NUMBER: _____

SERIAL NUMBER:

(PLACE SERIAL NUMBER STICKER HERE)

EXPIRY DATE:

SHOULD ANY DEFECT IN MATERIAL OR WORKMANSHIP DEVELOP IN THE PRODUCT,

- CALL 1.800.42.555.43 OR VISIT www.hamiltonbeach.in FOR SERVICE CENTER LOCATIONS OR
- KINDLY TAKE THE PRODUCT TO THE PLACE OF PURCHASE OR
- CALL 1.800.42.555.43 FOR SERVICE AT HOME¹

THE PRODUCT OR ANY COMPONENT OF PRODUCT FOUND TO BE DEFECTIVE WILL BE REPAIRED OR REPLACED FREE OF CHARGE DURING THE WARRANTY PERIOD OF 2 YEARS, FROM THE DATE OF PURCHASE. IF THE PRODUCT OR COMPONENT IS NO LONGER AVAILABLE, WE WILL REPLACE WITH A SIMILAR ONE OF EQUAL OR GREATER VALUE.

¹At-home service is limited to certain geographical areas in India; please call 1.800.42.555.43 for further details.

840234600

NAME OF DEALER: _____
DEALER'S SIGNATURE: _____
CUSTOMER'S SIGNATURE: _____
STAMP: _____

VALIDITY:

- THIS WARRANTY IS ISSUED SUBJECT TO THE PRODUCTION AND VERIFICATION OF THE ORIGINAL PROOF OF PURCHASE.
- THIS WARRANTY IS VALID IN INDIA ONLY AND IF PRODUCT HAS BEEN PURCHASED FROM AN AUTHORIZED HAMILTON BEACH DEALER.
- THIS WARRANTY DOES NOT COVER GLASS, FILTERS, WEAR FROM NORMAL USE, USE NOT IN CONFORMITY WITH THE PRINTED DIRECTIONS, OR DAMAGE TO THE PRODUCT RESULTING FROM ACCIDENT, ALTERATION, ABUSE, OR MISUSE. THIS WARRANTY ONLY EXTENDS TO THE ORIGINAL CONSUMER PURCHASER OR THE GIFT RECIPIENT.

THE WARRANTY WILL BE CONSIDERED INVALID IF:

- PRODUCT HAS NOT BEEN USED PER THE MANUFACTURER'S OPERATING INSTRUCTIONS.
- PRODUCT HAS BEEN SERVICED, REPAIRED, OPENED, OR TAMPERED WITH BY ANY UNAUTHORIZED PERSON.
- UNAUTHORIZED CORRECTION/ALTERATIONS IN INVOICE COPY/INSTALLATION NOTE/SERIAL NUMBER OF PRODUCT.
- INCOMPLETE WARRANTY CARD AFTER PURCHASE.
- ANY ATTACHMENTS NOT RECOMMENDED BY THE MANUFACTURER HAVE BEEN USED ON THE PRODUCT.
- PRODUCT IS USED FOR OTHER THAN SINGLE-FAMILY HOUSEHOLD USE OR SUBJECTED TO ANY VOLTAGE AND WAVEFORM OTHER THAN 220-240V~/ 50Hz.

7/13