

**READ BEFORE USE**

Visit [www.hamiltonbeach.in](http://www.hamiltonbeach.in) for our complete line of products and Use and Care Guides – as well as delicious recipes, tips, and other useful information!

**Questions?**  
Please call us – our friendly associates are ready to help.  
**1.800.42.555.43**

# Hamilton Beach®

## Water Kettle



## IMPORTANT SAFEGUARDS

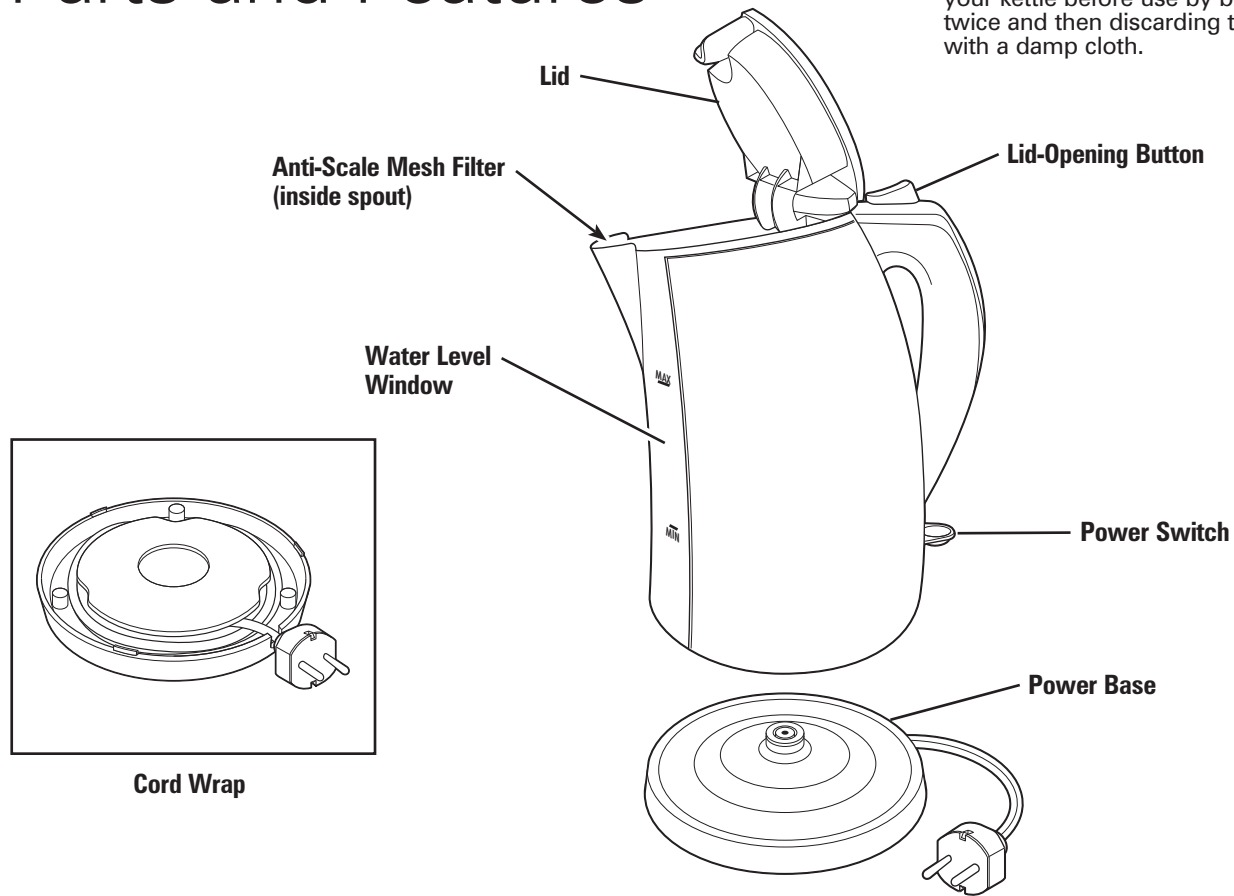
When using electrical appliances, basic safety precautions should always be followed to reduce the risk of fire, electric shock, and/or, injury to persons, including the following:

1. Read all instructions.
2. This appliance is intended to be used in household and similar applications such as: staff kitchen areas in shops, offices, and other working environments; farm houses; by clients in hotels, motels, and other residential-type environments; bed and breakfast-type environments.
3. Do not touch hot surfaces. Use handles or knobs. Care must be taken, as burns can occur from touching hot parts or from spilled, hot liquid.
4. To protect against electric shock, do not place cord, plug, kettle, or power base in water or other liquid.
5. This appliance can be used by children aged from 8 years and above and persons with reduced physical, sensory, or mental capabilities or lack of experience and knowledge if they have been given supervision or instruction concerning use of the appliance in a safe way and understand the hazards involved. Children shall not play with the appliance. Cleaning and user maintenance shall not be made by children without supervision.
6. Close supervision is necessary when any appliance is used by or near children.
7. Unplug from outlet when kettle is not in use and before cleaning. Allow to cool before putting on or taking off parts and before cleaning the appliance.
8. Scalding may occur if the lid is lifted during the heating cycle. Do not open lid until kettle has cooled completely.
9. Kettle must be operated on a flat surface away from the edge of counter to prevent accidental tipping.
10. Do not operate any appliance with a damaged supply cord, or after the appliance malfunctions or has been damaged in any manner. Supply cord replacement and repairs must be conducted by the manufacturer, its service agent, or similarly qualified persons in order to avoid a hazard.
11. The use of accessory attachments not recommended by the appliance manufacturer may cause injuries.
12. Do not use outdoors.
13. Do not let cord hang over edge of table or counter or touch hot surfaces, including stove.
14. Do not place kettle on or near a hot gas or electric burner or in a heated oven.
15. To disconnect kettle, turn controls to OFF and then remove plug from wall outlet.
16. **WARNING!** To reduce the risk of fire or electric shock, do not remove the bottom cover. No user-serviceable parts are inside. Repair should be done by authorized service personnel only.
17. Do not use appliance for other than intended use.
18. **WARNING:** Do not remove lid while the water is boiling.
19. Only use power stand provided with your kettle.
20. **CAUTION:** In order to avoid a hazard due to inadvertent resetting of the thermal cut-out, this appliance must not be supplied through an external switching device, such as a timer, or connected to a circuit that is regularly switched on and off by the utility.

**SAVE THESE INSTRUCTIONS!**

# Parts and Features

**BEFORE FIRST USE:** If you are using the kettle for the first time, it is recommended that you should clean your kettle before use by boiling a full kettle of water twice and then discarding the water. Wipe the surface with a damp cloth.

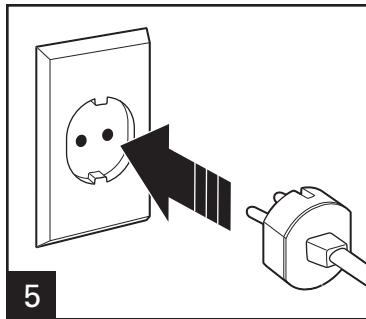
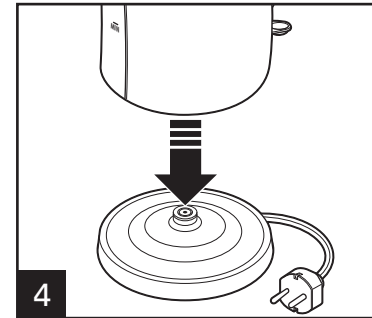
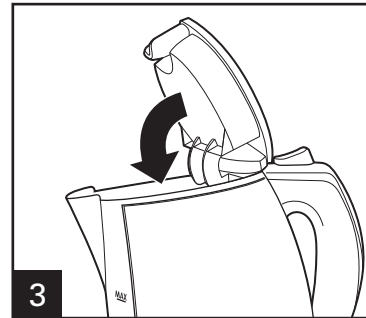
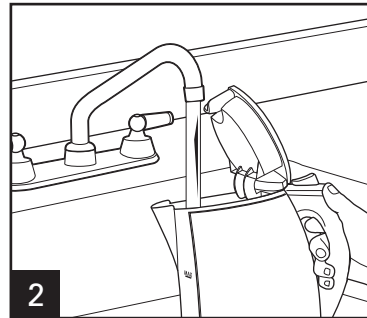
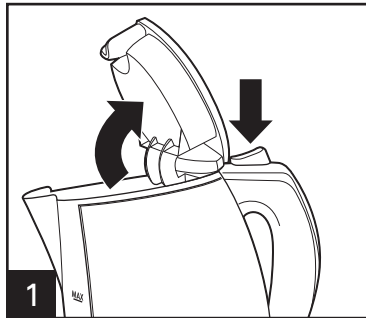


# How to Use the Kettle

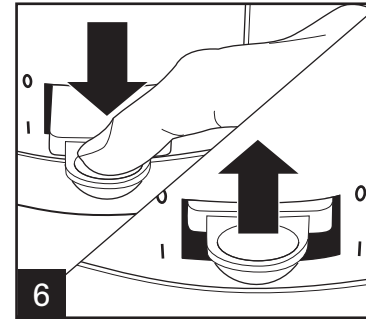
**⚠ WARNING**

**Burn Hazard.**

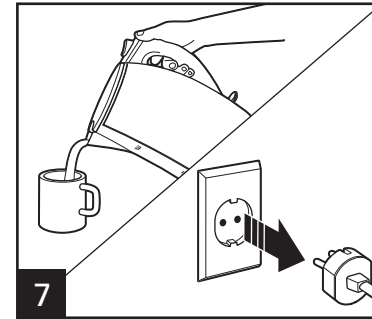
Do not overfill kettle. Boiling water may spit out of the spout.



**NOTE:** The maximum capacity of the kettle is 1.7 L. Do not fill with water over the maximum level, since water may spill out of the spout when boiling.



Kettle will automatically shut off when water has boiled.

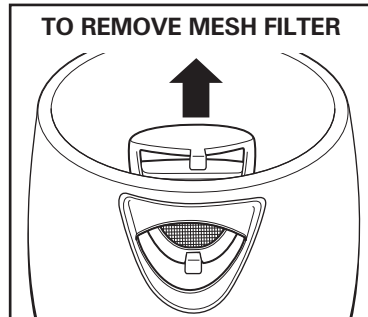


**NOTE:** Only use kettle to heat water. If kettle is used to heat other liquids, such as coffee or tea, the warranty will be voided.

# Care and Cleaning

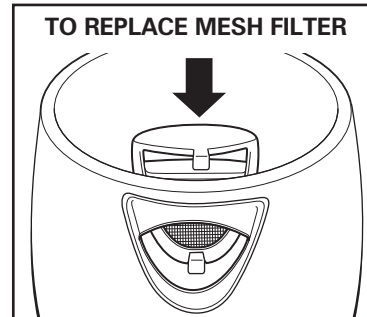
**⚠ WARNING Electrical Shock Hazard.**

Do not immerse kettle, power base, or plug in water or other liquid.

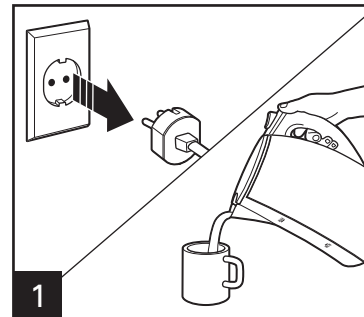


The mesh filter is visible through the kettle lid opening. Pull upwards on the tab to remove. Rinse filter periodically.

**WARNING!** Burn Hazard: Allow kettle to cool before attempting to remove mesh filter.

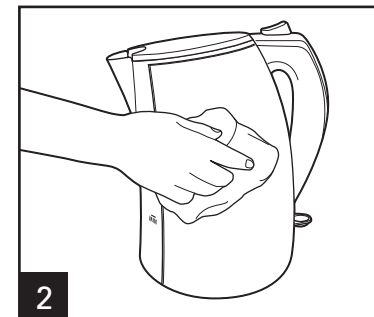


To replace, slide the filter back into the slot, ensuring the tab is facing inwards. The filter will fit only one way.



To avoid scale/lime deposit build-up, empty kettle after each use.

To remove discoloration or scale/lime deposit from heating element: Place 1/2 teaspoon cream of tartar (available in the spice aisle of grocery store) into the kettle. Then fill the kettle 1/2 full with water. Plug in, turn ON (I), and bring to boil. Turn OFF (O), let cool, and rinse several times with clean tap water.



Wipe the exterior of kettle with a damp cloth. Do not use abrasive scouring pads or powders since they may scratch the smooth surface of the kettle.

# Care and Cleaning (cont.)

## **IF KETTLE FLOOR DISCOLORS:**

It is normal for stainless steel heating elements to discolor. This does not affect the performance of the kettle. Do not use abrasive scouring pads or cleaners since this may damage the stainless steel surface.

## **IF KETTLE BOILS DRY:**

The heating element is protected by two automatic safety devices. If your kettle is accidentally switched on without being filled with water, or is allowed to boil dry, the kettle will automatically switch off. You should:

- Turn the switch to OFF (O), unplug, and wait about 20 minutes for the element to cool down.
- Refill the kettle; then use as normal and check that the kettle functions correctly.

## **IF KETTLE DOES NOT WORK:**

Make these simple checks before calling the toll-free customer assistance number:

- Have you turned power switch to ON (I) position?
- If the kettle heats but does not boil, it might need descaling.
- Has the kettle been accidentally switched on without being filled with water or allowed to boil dry? Turn the switch to OFF (O), wait 20 minutes, and try again.
- Is cord firmly plugged into the outlet and kettle firmly seated in the base?

## **ANTI-SCALE MESH FILTER:**

Scale is caused by lime and calcium in hard water. The mesh filter will prevent these suspended particles from being poured out of the kettle. The filter should be cleaned periodically to ensure optimum performance. To clean the filter, unplug kettle and allow to cool. The mesh filter may be removed by pressing on filter tab, which is visible through the kettle opening. Rinse filter under running water and brush with a soft brush. An old, clean toothbrush works well.

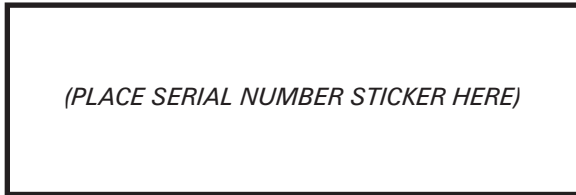
# Notes

# Limited Warranty

CUSTOMER NAME: \_\_\_\_\_  
ADDRESS: \_\_\_\_\_  
PHONE NUMBER: \_\_\_\_\_  
MODEL NUMBER: \_\_\_\_\_  
DATE OF PURCHASE: \_\_\_\_\_ BILL NUMBER: \_\_\_\_\_

NAME OF DEALER: \_\_\_\_\_  
DEALER'S SIGNATURE: \_\_\_\_\_  
CUSTOMER'S SIGNATURE: \_\_\_\_\_  
STAMP:

SERIAL NUMBER:



**EXPIRY DATE:**

SHOULD ANY DEFECT IN MATERIAL OR WORKMANSHIP DEVELOP IN THE PRODUCT,

- CALL 1.800.42.555.43 OR VISIT [www.hamiltonbeach.in](http://www.hamiltonbeach.in) FOR SERVICE CENTER LOCATIONS OR
- KINDLY TAKE THE PRODUCT TO THE PLACE OF PURCHASE OR
- CALL 1.800.42.555.43 FOR SERVICE AT HOME<sup>1</sup>

THE PRODUCT OR ANY COMPONENT OF PRODUCT FOUND TO BE DEFECTIVE WILL BE REPAIRED OR REPLACED FREE OF CHARGE DURING THE WARRANTY PERIOD OF 2 YEARS, FROM THE DATE OF PURCHASE. IF THE PRODUCT OR COMPONENT IS NO LONGER AVAILABLE, WE WILL REPLACE WITH A SIMILAR ONE OF EQUAL OR GREATER VALUE.

<sup>1</sup>At-home service is limited to certain geographical areas in India; please call 1.800.42.555.43 for further details.

840235100

**VALIDITY:**

- THIS WARRANTY IS ISSUED SUBJECT TO THE PRODUCTION AND VERIFICATION OF THE ORIGINAL PROOF OF PURCHASE.
- THIS WARRANTY IS VALID IN INDIA ONLY AND IF PRODUCT HAS BEEN PURCHASED FROM AN AUTHORIZED HAMILTON BEACH DEALER.
- THIS WARRANTY DOES NOT COVER GLASS, FILTERS, WEAR FROM NORMAL USE, USE NOT IN CONFORMITY WITH THE PRINTED DIRECTIONS, OR DAMAGE TO THE PRODUCT RESULTING FROM ACCIDENT, ALTERATION, ABUSE, OR MISUSE. THIS WARRANTY ONLY EXTENDS TO THE ORIGINAL CONSUMER PURCHASER OR THE GIFT RECIPIENT.

**THE WARRANTY WILL BE CONSIDERED INVALID IF:**

- PRODUCT HAS NOT BEEN USED PER THE MANUFACTURER'S OPERATING INSTRUCTIONS.
- PRODUCT HAS BEEN SERVICED, REPAIRED, OPENED, OR TAMPERED WITH BY ANY UNAUTHORIZED PERSON.
- UNAUTHORIZED CORRECTION/ALTERATIONS IN INVOICE COPY/INSTALLATION NOTE/SERIAL NUMBER OF PRODUCT.
- INCOMPLETE WARRANTY CARD AFTER PURCHASE.
- ANY ATTACHMENTS NOT RECOMMENDED BY THE MANUFACTURER HAVE BEEN USED ON THE PRODUCT.
- PRODUCT IS USED FOR OTHER THAN SINGLE-FAMILY HOUSEHOLD USE OR SUBJECTED TO ANY VOLTAGE AND WAVEFORM OTHER THAN 220-240V~/ 50Hz.

8/13