

READ BEFORE USE

使用前阅读

Visit www.hamiltonbeach.cn for our complete line of products and Use and Care Guides – as well as delicious recipes, tips, and to register your product online!



有关我们所有系列产品的，使用与维护指南 – 以及美味食谱、生活小贴士和产品在线注册的更多信息，请访问 www.proctorsilex.cn。

Questions?

**Please call us – our friendly associates are ready to help.
China: 400-852-2655**

如有疑问？

请致电我们，我们的团队随时准备为您提供帮助。

中国大陆客服热线：

400-852-2655

官方网站：www.proctorsilex.cn

型号：58139-CN

此说明书中图片仅供参考，产品以实物为准。

使用产品前请仔细阅读本使用说明书，并妥善保管。

Proctor Silex



MultiBlend Blender 台式搅拌机

English	2
简体中文	10

IMPORTANT SAFEGUARDS

This product is intended for household use only. When using electrical appliances, basic safety precautions should always be followed to reduce the risk of fire, electric shock, and/or injury to persons, including the following:

1. **R**ead all instructions.
2. **T**his appliance is not intended for use, cleaning, or maintenance by persons (including children) with reduced physical, sensory, or mental capabilities, or lack of experience and knowledge, unless they are closely supervised and instructed concerning the use of the appliance by a person responsible for their safety. **C**hildren should be supervised to ensure that they do not play with the appliance.
3. **T**his appliance shall not be used by children. **K**ee the appliance and its cord out of reach of children.
4. **C**leaning and user maintenance shall not be made by children without supervision.
5. **T**o protect against risk of electrical shock, do not put cord, plug, base, or motor in water or other liquid.
6. **A**lways disconnect the appliance from the power supply if it is left unattended and before assembling, disassembling, or cleaning.
7. **A**void contact with moving parts.
8. **D**o not operate any appliance with a damaged supply cord or plug, or after the appliance malfunctions or has been dropped or damaged in any manner. **S**upply cord replacement and repairs must be conducted by the manufacturer, its service agent, or similarly qualified persons in order to avoid a hazard. **C**all the provided customer service number for information on examination, repair, or adjustment.

9. **T**he use of attachments, including canning jars, not recommended or sold by the appliance manufacturer may cause a risk of injury to persons.
10. **D**o not use outdoors.
11. **D**o not let cord hang over edge of table or counter or touch hot surfaces, including stove.
12. **K**eeP hands and utensils out of blender jar while blending to reduce the risk of severe personal injury and/or damage to blender. **A** rubber spatula may be used but must be used only when blender is not running.
13. **B**lades are sharp; handle carefully—especially when assembling, disassembling, or cleaning inside blender jar.
14. **D**o not place appliance on or near a hot gas or electric burner, or in a heated oven.
15. **D**o not place on or near a hot gas or electric burner, or in a heated oven.
16. **D**o not use a broken, chipped, or cracked blender jar.
17. **D**o not use broken, cracked, or loose cutting blade assembly.
18. **T**o reduce the risk of injury, never place cutting blade assembly on base without blender jar properly attached.
19. **A**lways operate blender with lid in place.
20. **B**e careful if hot liquid is poured into the blender as it can be ejected out of the appliance due to sudden steaming.
21. **W**hen blending hot liquids, remove filler-cap of two-piece lid and close the edge cover opening intended for pouring. **T**o prevent possible burns: **D**o not exceed the 3-cup (710-ml) level. **H**ot liquids may push off two-piece lid during blending; therefore, with the protection of an oven mitt or thick towel, place one hand on top of the lid, keep exposed skin away from the lid, and start blending at lowest speed.

22. **E**nsure collar on base of blender jar is tight and secure. **I**njury can result if moving blades accidentally become exposed.
23. **I**f the jar should twist or rotate when the motor is switched ON, switch OFF immediately and tighten jar in collar or on blender base.
24. **D**o not leave blender unattended while it is operating.
25. **B**efore plugging cord into wall socket, turn the control to OFF (●). **T**o disconnect cord, turn the control to OFF (●). **T**hen remove plug from wall socket.
26. **D**o not use appliance for other than intended purpose.
27. **CAUTION!** In order to avoid a hazard due to inadvertent resetting of the thermal cutout,

this appliance must not be supplied through an external switching device, such as a timer, or connected to a circuit that is regularly switched on and off by the utility.

28. **D**o not operate more than 2 minutes ON.
29. **T**his appliance is not intended to be operated by means of an external timer or separate remote-control system.

SAVE THESE INSTRUCTIONS

Other Consumer Safety Information

If the cutting blade assembly locks and will not move, it will damage the motor. Do not use. Call the customer service number for information.

Do not place blender jar in the freezer filled with food or liquid. This can result in damage to the cutting blade assembly, jar, blender, and possibly result in personal injury.

BEFORE FIRST USE: After unpacking blender, wash everything except blender base in hot, soapy water. Dry thoroughly. Wipe blender base with a damp cloth or sponge. **DO NOT IMMERSE BASE IN WATER.** Care should be taken when handling cutting blade assembly as it is very sharp.

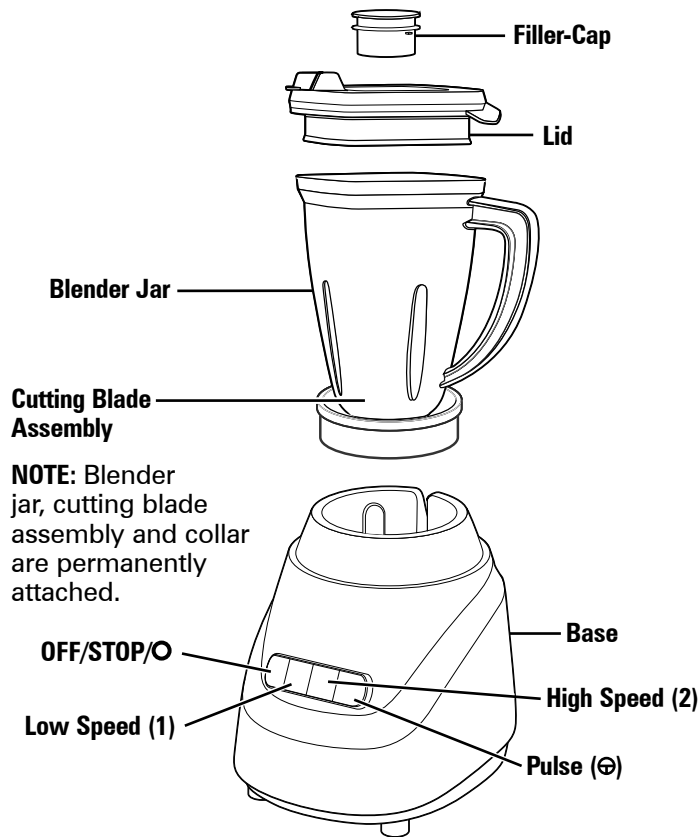
Parts and Features

Model: 58139-CN

Type: B89

Ratings:

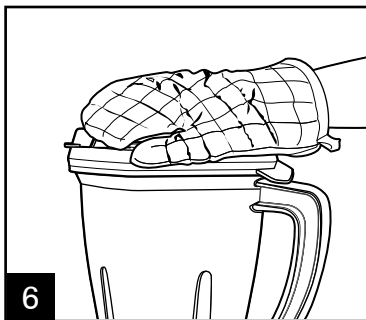
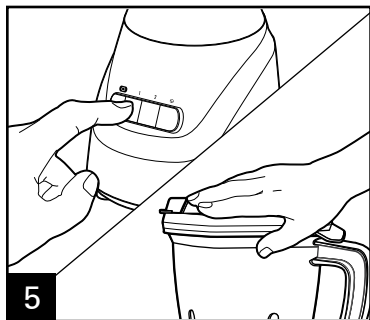
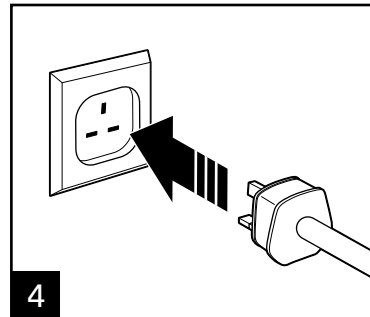
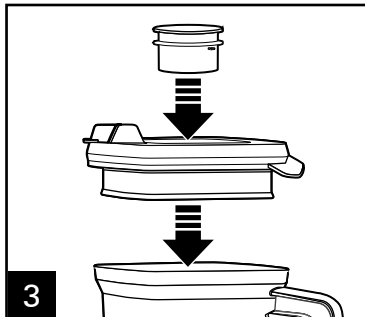
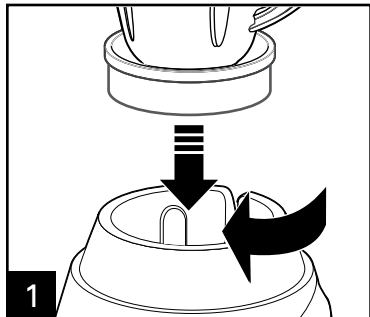
220-240 V~ 50-60 Hz 350 W



Using Your Blender

BEFORE FIRST USE: After unpacking the blender, follow the instructions in "Cleaning Your Blender."

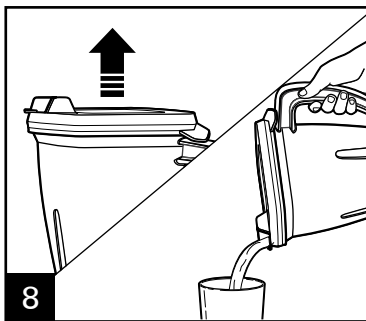
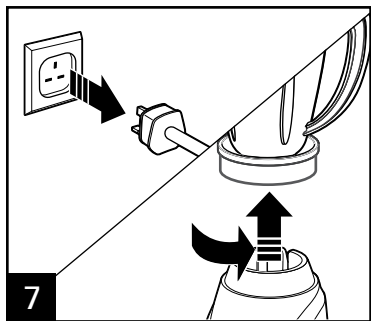
IMPORTANT: Your blender jar and cutting blade assembly are subject to wear during normal use. Always inspect jar for nicks, chips, or cracks. Always inspect cutting blade assembly for broken, cracked, or loose blades. If jar or cutting blade assembly is damaged, do not use. Call our customer service number to obtain replacement parts.



Push the desired speed button. When using the PULSE (⏻) button, the blender will only run when the button is held down.

⚠ WARNING Burn Hazard:
When blending hot liquids, remove filler-cap of two-piece lid and close the edge cover opening intended for pouring. To prevent possible burns: Do not exceed the 3-cup (710-ml) level. Hot liquids may push off two-piece lid during blending; therefore, with the protection of an oven mitt or thick towel, place one hand on top of the lid, keep exposed skin away from the lid, and start blending at lowest speed.

Using Your Blender (cont.)



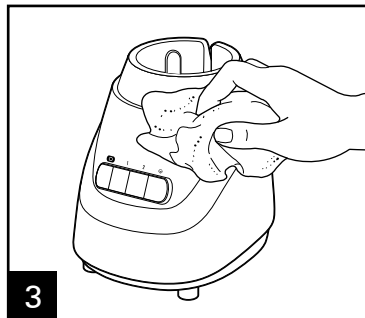
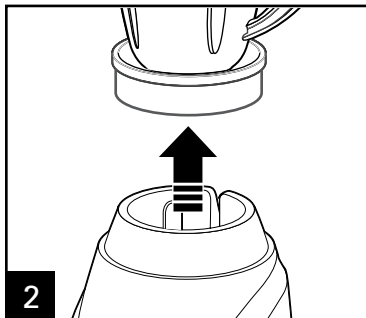
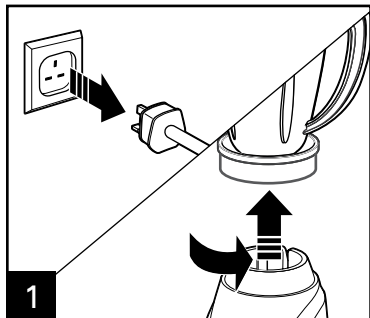
Blender Tips

- To add foods when blender is operating, remove filler-cap from blender lid and add ingredients through the opening.
- For best performance, the minimum amount of liquid needed per recipe is 1 cup (8 ounces/237 ml). Add more liquid if food is not blending properly.
- If blending action stops during blending or ingredients stick to sides of the jar, add more liquid to the blender jar.
- Do not try to mash potatoes, mix stiff dough, whip egg whites, grind raw meat, or extract juices from fruits and vegetables.
- Do not store food or liquids in the blender jar.
- Avoid bumping or dropping the blender when in operation or at any time.

Cleaning Your Blender

⚠ WARNING Electrical Shock Hazard.

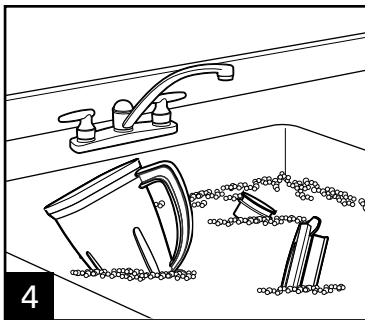
Disconnect power before cleaning. Do not immerse cord, plug, base, or motor in water or other liquid.



Wipe blender base, control panel, and cord with a damp cloth or sponge. To remove stubborn spots, use a mild, nonabrasive cleanser.



DO NOT use the "SANI" setting when washing in the dishwasher. "SANI" cycle temperatures could damage your product. Parts may also be washed with hot, soapy water. Care should be taken when handling the cutting blade assembly as it is very sharp. Rinse and dry thoroughly. Do not soak.



Carefully wash jar with blades, lid, and filler cap in hot, soapy water. Rinse and dry thoroughly. Do not soak.

重要安全说明

本产品建议于家庭使用。当使用电器时，应始终遵守基本的安全防范措施，以减少火灾、触电和/或人身伤害的风险，包括以下内容：

1. 阅读所有相关说明。
2. 本电器不适合以下人群（包括儿童）使用、清洁或维护：行动不便者、精神或智商缺陷者、缺少经验和常识者，除非他们在监护人的密切监督和指导下使用，以确保安全。请勿将本电器用于儿童玩耍。
3. 本电器不得由儿童使用。本电器及其电源线应远离儿童。
4. 在未受监督下儿童不可以执行清洁和用户维护工作。
5. 为防止触电危险，请勿将电源线、插头底座或电机放入水或其他液体中。
6. 如果本电器无人看护时或在组装、拆卸或清洁前，请断开电源线连接。
7. 避免接触正在运动的部件。
8. 在下列情况下，请勿使用电器：电源线或插头破损、电器出现故障、电器跌落或已经出现任何形式的损坏。为了避免危险，电源线更换和维修必须由制造商、维修代理商或同等资质的人员进行。请拨打我们的客服电话，咨询有关电器检查、修理或调整的相关信息。
9. 使用非本电器制造商建议或出售的附件，包括搅拌杯，可能会造成人员受伤的风险。
10. 请勿户外使用。

11. 请勿将电源线搭置在桌台边缘上或与发热表面接触，包括电炉。
12. 搅拌时保持双手及用具远离搅拌杯，以降低人员严重受伤和/或搅拌机损坏的风险。可使用橡胶刮铲，但仅限于在搅拌机未运行时使用。
13. 刀片很锋利；尤其在组装、拆解或清洁搅拌杯内部时，务必要小心处理。
14. 请勿将电器置于燃气、电炉、热烤箱上面或附近。
15. 请勿置于燃气、电炉、热烤箱上面或附近。
16. 请勿使用破损、有裂口或裂痕的搅拌杯。
17. 请勿使用裂口、裂痕或松动的切割刀片组件。
18. 为了降低受伤风险，在未将搅拌杯正确安装前，禁止将切割刀片组件置于底座上。
19. 务必在搅拌杯盖子盖好后才操作搅拌机。
20. 当心，如果热液体倒入到搅拌机中，由于突然的蒸汽可能会导致液体从搅拌机中喷出。
21. 搅拌热液体时，取下两件式盖子的加料口盖，然后关上用于倒出的边盖口。为了防止可能的烫伤：请勿超过 3 杯（710 毫升）液位。搅拌过程中热液体可能会将两件式盖子推出；因此，应戴上烤箱手套或用厚毛巾进行保护，用戴手套的手压住盖子的顶部，保持裸露的皮肤远离盖子，然后开始以最低速度搅拌。
22. 确保搅拌杯底座的轴环紧固稳定。如果转动刀片意外暴露，则可能导致受伤。
23. 如果在电机开启时搅拌杯扭转或转动，请将开关动至 OFF (O) 关闭位置，然后将搅拌杯紧固在轴环中或搅拌机底座上。

- 24. 请勿让搅拌机在无人看管的情况下运行。
- 25. 电源线插入到电源插座前，请先将控件开关旋转到 OFF (●)关闭位置。如果要断开电源线的连接，请先将控件开关旋转到 OFF (●)关闭位置。然后从电源插座拔掉电源线插头。
- 26. 请勿将该电器用于非预期用途。
- 27. 小心！为了避免由于热熔断器意外重置导致的危险，本电器禁止通过外接开关设备（例如：定时器）进行供电，或禁止连接到由供电部门定期开启和关闭的电路。
- 28. 请勿运行 2 分钟以上。
- 29. 本电器不可用通过外部定时器或单独的遥控系统进行操作。

请妥善保管说明书！

其他用户安全信息

如果切割刀片组件锁住而不能移动，可能会损坏电机。请勿使用。要了解有关信息，请拨打售后服务电话。

请勿将装有食物或液体的搅拌杯放入冰箱中。这可能导致切割刀片组件、搅拌杯、搅拌机损坏及可能的人身伤害。

首次使用前：拆开搅拌机的包装后，用带清洁剂的温水清洗搅拌机底座以外的所有组件。彻底晾干。用湿布或海绵擦拭搅拌机底座。请勿将底座浸入水中。处理切割刀片组件时要非常小心，因为它非常锋利。

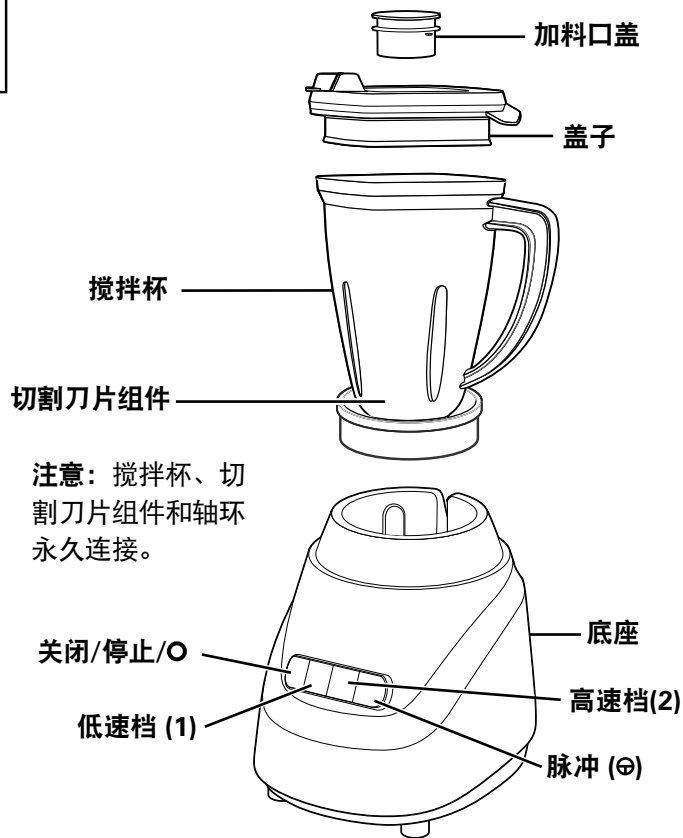
部件和功能

型号: 58139-CN

类型: B89

额定值:

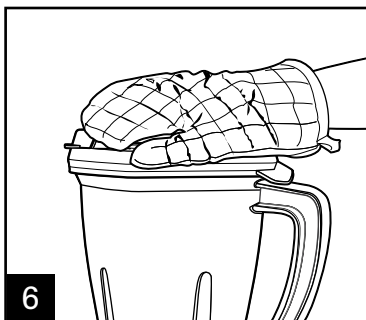
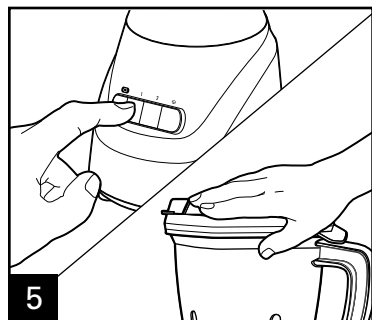
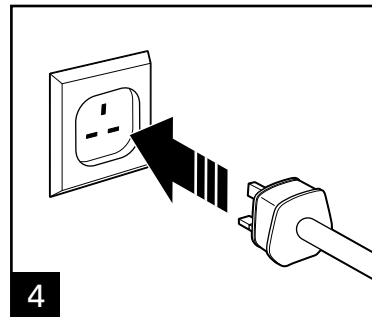
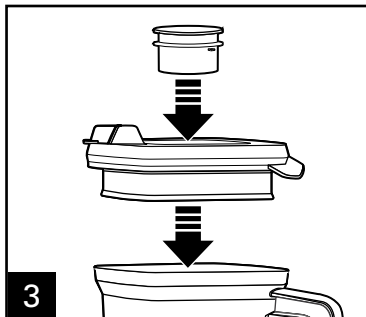
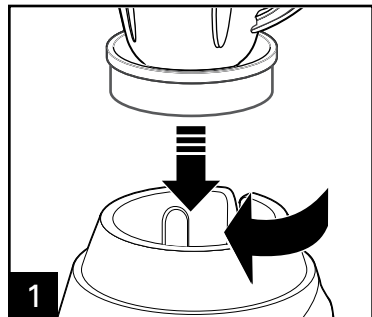
220-240 伏~ 50-60 赫兹 350 瓦



使用您的搅拌机

首次使用前：拆开搅拌机的包装后，请遵循“清洁您的搅拌机”中的说明。

重要提示：您的搅拌杯和切割刀片组件在正常使用过程中可能会磨损。请务必检查搅拌杯是否有裂纹、缺口或裂缝。请务必检查切割刀片组件是否有破损、破裂或松动。如果搅拌杯或切割刀片组件损坏，请勿使用。请拨打我们的客服电话，以获得更换部件。



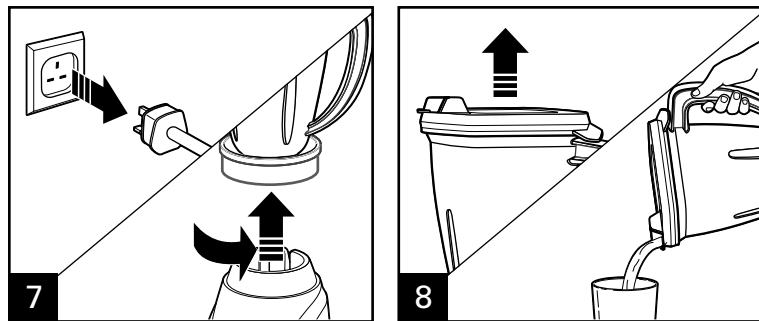
按下所需的速度按钮。使用脉冲 (⊙) 按钮时，搅拌机仅在保持按下该按钮后才运行。

⚠ 警告

烫伤危险：

搅拌热液体时，取下两件式盖子的加料口盖，然后关上用于倒出的边盖口。为防止可能的烫伤：请勿超过 3 杯（710 毫升）的液位。搅拌过程中热液体可能会将两件式盖子推出；因此，应戴上烤箱手套或用厚毛巾进行保护，用戴手套的手压住盖子的顶部，保持裸露的皮肤远离盖子，然后开始以最低速度搅拌。

使用您的搅拌机（续）



搅拌机小贴士

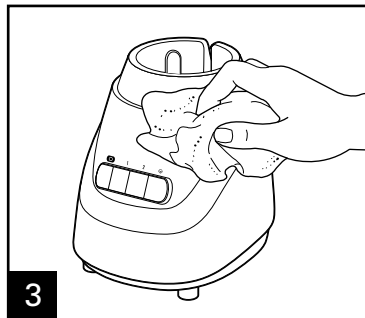
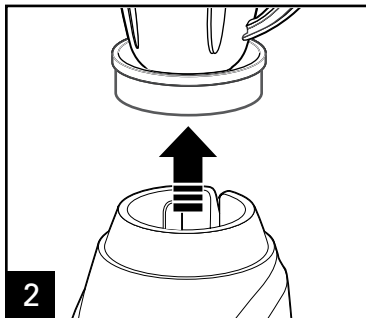
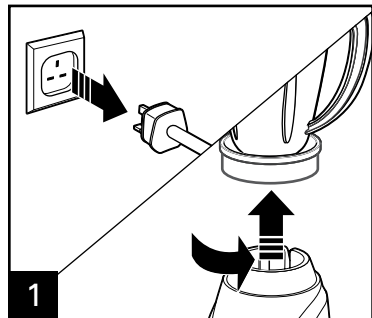
- 若要在搅拌机运行时加入食物，请从杯盖上取下加料口盖，然后通过开口加入食材。
- 为获得最佳性能，每种食谱至少需要 1 杯（8 盎司/237 毫升）液体。如果食物未正确混合，请加入更多液体。
- 如果搅拌过程中搅拌操作停止或食材粘在搅拌杯侧面，可向搅拌杯中再加入液体进行充分搅拌。
- 请勿尝试捣烂土豆、搅拌硬面、打蛋清、磨生肉或从水果和蔬菜中提取汁液。
- 请勿将食物或液体储存在搅拌杯中。
- 避免在运行过程中或在任何时间碰撞搅拌机或使其跌落。

清洁您的搅拌机

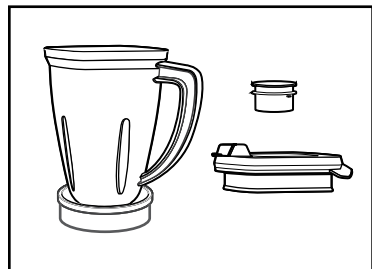
警告

触电危险。

清洁前断开电源。请勿将电源线、插头、底座或电机浸入水或其他液体中。

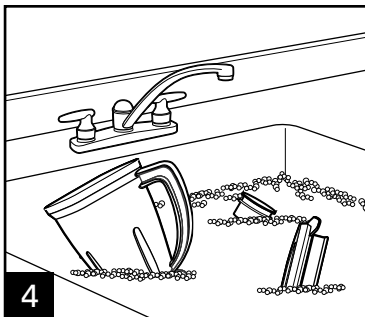


用湿布或海绵擦拭搅拌机底座、控制面板和电源线。若要去除顽固的斑点，请使用温和的防磨损清洁剂。



可在洗碗机中安全清洗

在洗碗机中清洗时，请勿使用“SANI”设置。“SANI”循环温度会损坏本产品。部件也可以在带清洁剂的温水中清洗。处理切割刀片组件时要非常小心，因为它非常锋利。冲洗，然后彻底晾干。请勿浸泡。



小心在带清洁剂的温水中清洗带刀片组件的搅拌杯、盖子和加料口盖。冲洗，然后彻底晾干。请勿浸泡。

注意

Model/型号:
58139-CN

Type/类别:
B89

Capacity/容积:
1.4L

Rating/规格
220-240 V~ 50-60Hz 350W

制造商: 汉密尔顿海滩电器(深圳)有限公司

地址: 深圳市福田区深南西路车公庙工业区天安数码时代大厦主楼 1306-1308 1309-1311 单元

本产品执行标准: GB4706.1-2005, GB4706.30-2008

以上内容如有改动, 恕不预先通知



添加官方微博 微信
开启美食人生