

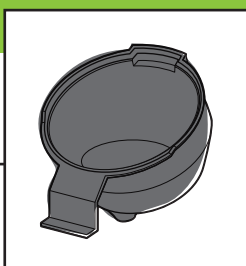
Usage tips for your FlexBrew™



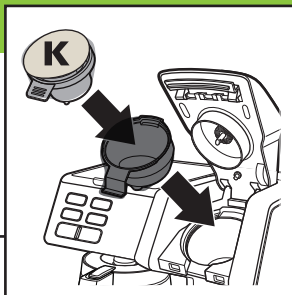
Always use the funnel when brewing coffee.

The funnel prevents spillage of hot coffee on the counter.

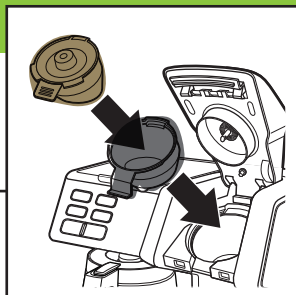
Funnel



Using
Funnel with
Single-Serve
Pack



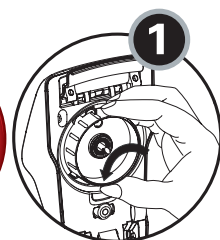
Using
Funnel with
Ground Coffee



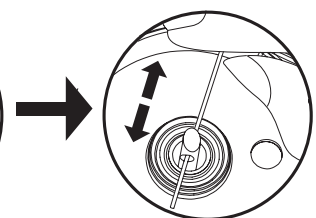
If the FlexBrew™ does not brew or dispense coffee – the needle may need unclogging. Follow the simple steps below to unclog.



**Unplug
and allow
to cool.**

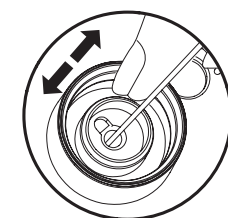


**Remove gray
needle holder.**



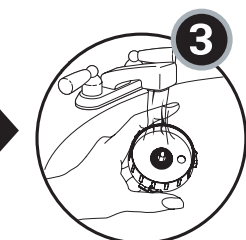
**With a bent paperclip,
clean hole in needle.**

2



**Turn over the holder
& clean out the 2 holes.**

3



**Rinse and re-install,
turning clockwise.**

Hamilton Beach®

How to get the best brewing performance
from your FlexBrew™ Coffee Maker.

Usage Tips

880032200 | ©2017 Hamilton Beach Brands, Inc.
For more Good Thinking®, visit www.hamiltonbeach.com